

CANADIAN DERIVATIVES CLEARING CORPORATION



PRINCIPLES FOR FINANCIAL MARKET INFRASTRUCTURE (“PFMI”)

Disclosure

The information provided in this disclosure is accurate as of December 31, 2021

This disclosure is accessible online on CDCC website at www.cdcc.ca

Although all reasonable care has been taken in the preparation of this document, no representation or warranty, express or implied, is made or given by or on behalf of CDCC, the Bourse the Montreal or the TMX Group, its affiliates, directors or any other person as to the accuracy, completeness or fairness of the information or opinions contained therein and no responsibility or liability is accepted for any such information or opinions. This document has been prepared for information and discussion purposes only and the opinions expressed therein are those of CDCC solely.

Table of Contents

Executive summary	5
General background on the FMI	6
General Description of CDCC and the Markets it serves	6
History	6
Markets	6
Key metrics (with updated values)	7
General Organization of the FMI	7
Legal and Regulatory Framework	8
System Design and operations	8
Definition of key terms and abbreviations	10
Principle-by-principle narrative disclosure	11
Principle 1: Legal Basis	11
Principle 2: Governance	14
Principle 3: Framework for the Comprehensive Management of Risks	18
Principle 4: Credit Risk	20
Principle 5: Collateral	24
Principle 6: Margin	27
Principle 7: Liquidity Risk	31
Principle 8: Settlement Finality	37
Principle 9: Money Settlements	39
Principle 10: Physical Deliveries	41
Principle 11: Central Securities Depositories	42
Principle 12: Exchange-of-value Settlement Systems	43
Principle 13: Participant Default Rules and Procedures	44
Principle 14: Segregation and Portability	47
Principle 15: General Business Risk	49
Principle 16: Custody and Investment Risks	51
Principle 17: Operational Risk	53
Principle 18: Access and Participation Requirements	57
Principle 19: Tiered Participation Arrangements	59
Principle 20: FMI Links	61
Principle 21: Efficiency and Effectiveness	63

Principle 22: Communication Procedures and Standards	64
Principle 23: Disclosure of Rules, Key Procedures and Market Data	65
Principle 24: Disclosure of Market Data by Trade Repositories	67
List of publicly available resources	68

I. Executive summary

The disclosure document constitutes the summary narrative of the Canadian Derivatives Clearing Corporation (“CDCC” or the “Corporation”) observance of the CPMI-IOSCO *Principles for Financial Market Infrastructures* (the “PFMI” or the “Principles”)¹. This disclosure aims at offering to CDCC’s Clearing Members, market participants, and the public a high-level understanding of CDCC’s governance, operation and risk-management framework.

This disclosure document has been prepared in accordance with the internationally recognized *“Principles for Financial Market Infrastructures: Disclosure framework and Assessment methodology”* published in December 2012 by the Committee on Payments and Marketing Infrastructures and the International Organization of Securities Commissions (“CPMI-IOSCO”). Headquartered in Montreal, Quebec, Canada, CDCC offers clearing and settlement services for all Montréal Exchange (“MX”) transactions, including Futures Contracts, Options on Equity and Share Futures as well OTC (Over-the-Counter) Fixed Income, including cash and repurchase agreements.

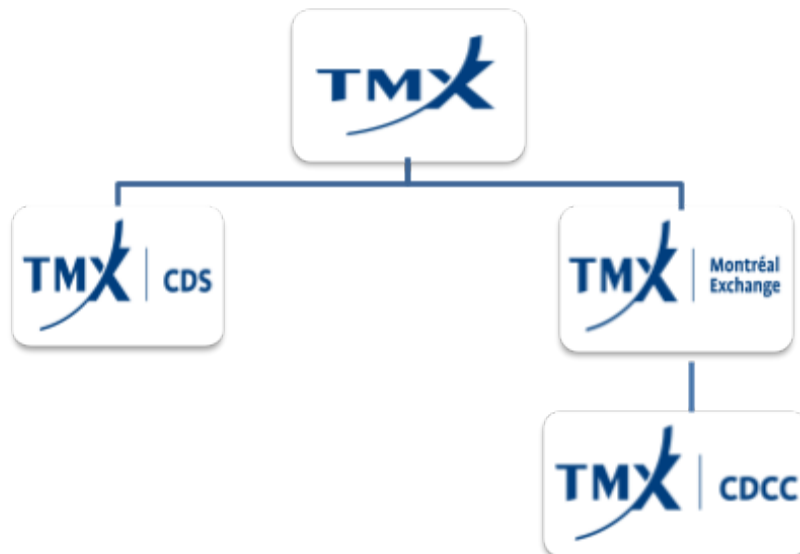
¹ Committee on Payments and Market Infrastructures and Technical Committee of the International Organization of Securities Commissions (CPMI-IOSCO), *“Principles for Financial Market Infrastructures”* (April 2012).

II. General background on the FMI

(A) General Description of CDCC and the Markets it serves

History

Originating in 1975 as clearing facilities to support the first Canadian equity options market, CDCC began clearing futures for the Toronto Futures Exchange in 1985. It became a wholly-owned subsidiary of the Montréal Exchange in 2000. In 2008, TMX Group Inc. was created through the combination of MX and TSX Group. In 2012, TMX Group Limited (“TMX Group”) (formerly the Maple Group Acquisition Corporation (“Maple”), completed the acquisition of a number of entities to form an integrated, multi-asset class exchange group. TMX Group today owns and operates both cash and derivatives markets for multiple asset classes including equities and fixed income. TMX Group’s subsidiaries also include the Canadian Depository for Securities Limited. (“CDS”), which supports Canada’s equity, fixed income and money markets.



Markets

CDCC has supported rapid growth in the Canadian derivatives marketplace for decades with expert clearing systems and risk management solutions. CDCC's technology infrastructure combined with its processes form the Canadian Derivatives Clearing System (CDCS). CDCC currently supports the clearing of all MX exchange-traded products including a wide range of equity, exchange-traded fund (“ETF”), and index derivative products. Such products include both Futures, Share Futures, and Options. CDCC also offers central counterparty (“CCP”) clearing services for an expanding selection of customized equity derivatives

products and fixed income (Repo) agreements to Canadian financial market participants. Since 2012, CDCC has been the only Canadian CCP to offer such CCP services for the clearing of fixed income (Repo) transactions. A list of the products available for clearing can be found on the [CDCC website](#).

CDCC applies rigorous risk management procedures to protect its Clearing Members. The major aspects of its risk management framework are its Membership standards, Margin Fund and Clearing Fund requirements, as well as its Default Management process. CDCC currently has 36 Clearing Members including major Canadian financial institutions..

Key metrics (with updated values)

	2019	2020	2021 (as of Sept 30, 2021)
Cleared Volumes - Futures	77,915,700	80,633,849	76,426,935
Cleared Volumes - Options	38,254,899	35,216,019	32,961,504
Cleared Volumes - Converge (Options)	645,642	356,593	552,250
Number of Transactions - Repo	145,568	118,648	91,139
Margin Fund (Deposit Value)	\$ 8,634,699,734	\$ 13,666,266,772	\$13,290,825,676
Clearing Fund (Deposit Value)	\$ 1,578,607,000	\$ 2,376,392,338	\$ 3,595,102,338

** Volumes and Transactions are single counted (only one side of the transaction is computed)*

General Organization of the FMI

CDCC governance structure consists of the Board of Directors of the Corporation (the “Board of Directors”) that is assisted by a Governance Committee and a Risk and Audit Committee in its oversight responsibility. The Board of Directors can also seek or obtain advice and non-binding recommendations from the Human Resources Committee established by TMX Group, the Corporation's parent company.

In addition, the Risk Management Advisory Committee (“RMAC”) assists and advises the management of CDCC, at its request, on risk management issues. The RMAC is entitled to give advice and make non-binding recommendations to the Board of Directors on the same issues. The Board of Directors and its committees have constituting policies in place addressing the roles and responsibilities of its members and procedures to manage conflict of interest.

The Board of Directors appoints the President, and other officers. It is supported by CDCC’s senior management team, its Risk Management, Corporate Operations, Business Development functions, as well as TMX Group Internal Audit, IT/System Services (Global Enterprise Services), Human Resources, and Legal departments. The roles and responsibilities of the senior management team — directly and through CDCC’s RMC — include ensuring the appropriate design, operation, and management of the risk management program and ensuring accurate, timely, and consistent reporting.

(B) Legal and Regulatory Framework

CDCC is incorporated under the *Canada Business Corporations Act*. CDCC operates throughout Canada while primarily conducting business in the provinces of Quebec and Ontario. CDCC is subject to various provincial securities legislations and its regulatory framework is formed by the provincial securities commissions' recognition orders and the Bank of Canada Regulatory Oversight Agreement.

CDCC is recognized as a clearing agency by the Autorité des marchés financiers (Quebec) (AMF)², the British Columbia Securities Commission (BCSC),³ and the Ontario Securities Commission (OSC)⁴. In April 2012, pursuant to the *Payment and Clearing Settlement Act* (PCSA), the Bank of Canada designated CDCC, which is the clearing and settlement system operated by CDCC, to be of systemic importance. As part of this designation, and pursuant to the Regulatory Oversight Agreement (ROA),⁵ CDCC became subject to the Bank of Canada's oversight. CDCC is also recognized as third-country CCP by the European Securities and Markets Authority (ESMA)⁶.

(C) System Design and operations

As the clearinghouse for exchange-traded and off-exchange derivative instruments as well as fixed income repurchase agreements (Repo), CDCC contributes to the integrity and stability of the Canadian market by acting as the central counterparty guarantor. CDCC guarantees the financial obligations of every contract that it clears by acting as the buyer to every seller and the seller to every buyer. CDCC thus protects the market participants from counterparty risk (also known as default risk or credit risk).

Upon acceptance of a Futures Contracts, Options on Equity and Share Futures, OTC (Over-the-Counter) Fixed Income, including cash and repurchase agreements transaction (the "Transaction"), novation occurs and the initial Transaction is replaced by two different transactions between the Corporation and each Clearing Member involved in the Transaction. Each Clearing Member looks to the Corporation for the performance of the obligations under a Transaction and not to another Clearing Member. All transactions that are submitted to CDCC are registered in the name of the Clearing Member either in the Firm and Client Accounts. As a result, each client of a Clearing Member looks solely to the Clearing Member for

² In May 2012, the AMF, pursuant to the section 12 of the Quebec Derivatives Act ("QDA"), issued the Decision 2012-PDG-0078 (the "AMF Recognition order") dated 2012-05-02 and as amended from time to time, recognizing CDCC as a clearing house.

³ In April 2012, the British Columbia Securities Commission (BCSC), pursuant to section 24(d) of the Securities Act (British Columbia), issued its decision 2012 BCSECCOM 277 (the "BC Recognition Order"), recognizing CDCC as a clearing agency.

⁴ In April 2014, the OSC, pursuant to section 21.1 of the Ontario Securities Act, issued an order recognizing CDCC as a clearing agency (the "OSC Recognition Order"), as amended from time to time.

⁵ In March 2012, the Bank of Canada and CDCC entered into the Regulatory Oversight Agreement. <http://www.bankofcanada.ca/core-functions/financial-system/clearing-and-settlement-systems/#corporation>

⁶ On January 27, 2016, pursuant to Article 25 of the Regulation (EU) No 648/2012 of the European Parliament and of the Council of 4 July 2012 on OTC derivatives, central counterparties and trade repositories (EMIR), ESMA issued a Decision to recognize CDCC as a third-country CCP.

performance of the obligations and not to the Corporation. The Corporation is obligated to the Clearing Member only.

CDCC provides support to its members in areas such as:

- Trading / assignment / exercise processing;
- Margin and collateral processing;
- Settlement and clearing; and
- IT processing.

CDCC registers, confirms, administers, and settles derivative transactions traded on the MX and through its Converge© OTC offerings within the Canadian Derivatives Clearing Service (“CDCS”). The CDCS platform includes the SOLA-C and SOLA-RN application components that were developed by TMX Group’s Information Technology teams.

The clearing, assignment and exercise of derivative contracts are conducted within its clearing application, SOLA-C. Trading transactions for CDCC’s Fixed Income offering are delivered via CDS Inc.’s CDSX application. The clearing and settlement of the start and end legs of the Repo transactions are also facilitated through the CDCS application system. Margin requirement calculations are performed on the margining sub-system SOLA-RN, which includes additional risk management parameterizations and manages the margin call interface to the risk engine.

III. Definition of key terms and abbreviations

AMF	Autorité des marchés financiers
BIA	Bankruptcy and Insolvency Act
BCM	Business Continuity Management
BCSC	British Columbia Securities Commission
CCP	Central Counterparties
CDCC	Canadian Derivatives Clearing Corporation
CDCS	Canadian Derivatives Clearing Service
CDS	Canadian Depository for Securities Limited (TMX)
CPSS	Committee on Payment and Settlement Systems
DMC	CDCC Default Management Committee
EMIR	European Market Infrastructure Regulation
ERM	Enterprise Risk Management
ESMA	European Securities and Markets Authority
FMI	Financial Market Infrastructures
IM	Initial Margin
IOSCO	International Organization of Securities Commissions
KER	CDCC Key Enterprise Risk
OSA	Ontario Securities Act
OSC	Ontario Securities Commission
OSFI	Office of the Superintendent of Financial Institutions
OTC	Over-the-Counter
ORM	Operational Risk Management
OWG	Operations Working Group
PCSA	Payment Clearing and Settlement Act
PFMI	Principles for financial markets infrastructures
QDA	Quebec Derivatives Act
RAS	CDCC Risk Appetite Statement
REC	Risk Evaluation Committee
RMAC	CDCC Risk Management Advisory Committee
RMC	CDCC Risk Management Committee
VM	Variation Margin

IV. Principle-by-principle narrative disclosure

Principle 1: Legal Basis

Principle

An FMI should have a well-founded, clear, transparent, and enforceable legal basis for each material aspect of its activities in all relevant jurisdictions.

Disclosure

Key consideration 1: The legal basis should provide a high degree of certainty for each material aspect of an FMI's activities in all relevant jurisdictions.

CDCC has a well-founded, clear, transparent, and enforceable legal basis, with a high degree of certainty, for each material aspect of its activities in all relevant jurisdictions (that is, the jurisdictions in which CDCC is authorized and regulated).

The material aspect of its clearing activity that CDCC considers requiring a high degree of legal certainty includes novation, netting and enforceability of its rights over collateral (margin and clearing fund deposits), the default management procedures, and finality of settlements.

CDCC's Rules and Membership Agreement are governed by the laws of Québec, as supplemented by the *Payment Clearing and Settlement Act* (Canada) ("PCSA"). CDCC is a recognized clearing house regulated by Québec's financial services regulatory authority, the *Autorité des marchés financiers* ("AMF"). CDCC's clearing and settlement system, the CDCS, is subject to oversight by the Bank of Canada. CDCC is also recognized as a clearing agency in Ontario by the Ontario Securities Commission (OSC) pursuant to the *Securities Act* (Ontario) ("OSA") and the British Columbia Securities Commission (BCSC) pursuant to the *Securities Act* (British Columbia). CDCC is also subject to the National Instrument 24-102 Clearing Agency requirements to the extent that the subject matters of each section of the instrument are not otherwise governed by the terms and conditions of a decision of the securities regulatory authorities that have recognized CDCC.

Pursuant to the designation by the Bank of Canada under the PCSA⁷ of CDCS, CDCC's settlement rules, which include the rules "that provide the basis on which payment obligations, delivery obligations or other transfers of property or interests in, or in Quebec rights to, property are made, calculated, netted or settled and includes rules for the taking of action in the event that a participant is unable or likely to become unable to meet its obligations to the clearing house, a CCP, other participants or the Bank of Canada" are valid and binding notwithstanding anything in any statute or other law of Canada or a province.

⁷ As described in the [PCSA Act](#), PART I: Clearing and Settlement System Regulation, Settlement Provisions (5)

In addition, pursuant to the PCSA, CDCC's rights or remedies, with respect to any collateral that has been granted to it as security for the performance of an obligation incurred in respect of the clearing and settlement services, are protected from the interference from any law relating to bankruptcy or insolvency.

Key consideration 2: An FMI should have rules, procedures, and contracts that are clear, understandable, and consistent with relevant laws and regulations.

CDCC's Rules and Operations Manual addresses the material aspects of CDCC's clearing activity including: novation, netting, default management procedures, and settlement finality. Rules, procedures and contracts of CDCC are closely monitored in the relevant jurisdictions by the regulatory authorities of Québec (AMF) and Ontario (OSC), and by the Bank of Canada under the Regulatory Oversight Agreement. The governing law of the legal framework supporting CDCC's contractual rights, rules and procedures is Québec law and the legal framework supporting CDCC's security interests in the collateral is generally governed by Ontario laws and/or Québec laws, as the case may be. In addition, the provisions of the PCSA are applicable to CDCC. Ontario law is specified in the participant agreement between CDCC and CDS as the law governing the account agreement including the creation of security interest in collateral credited to the account.

Key consideration 3: An FMI should be able to articulate the legal basis for its activities to relevant authorities, participants, and, where relevant, participants' customers, in a clear and understandable way.

CDCC articulates the legal basis for its activities to relevant authorities, participants, and, where relevant, participants' customers, in a clear and understandable way. Under the self-certification process set forth under and pursuant to the *Derivatives Act* (Québec) ("QDA"), the proposed rules (and rule changes) are accompanied by a detailed analysis that articulates the legal basis of the relevant new or amended provisions in respect of any of CDCC's activities. Such a new rule or rule change file is sent to all Clearing Members, posted on CDCC's website, and sent to the AMF and OSC, which publish it for a 30-day public comment period in their bulletins available electronically on their respective websites. Under the Regulatory Oversight Agreement, the same is also filed with the Bank of Canada for approval. As a result, regulators, Clearing Members, and market participants are informed of any new rules and rule changes and are given the opportunity to comment before their entry into force.

CDCC has rules, procedures, and contracts that are clear, understandable, and consistent with relevant laws and regulations. The CDCC Rules are readily accessible to Clearing Members and to the public in both English and French on CDCC's website. CDCC Rules have never been challenged as unclear or incomprehensible. Significant Rule changes are subject to public consultation and review by the regulators. Clearing Members, and other market participants, have the opportunity to question and comment on the relevant initiatives during the comment period and such a process contributes to ensuring that the Rules are clear and consistent.

Key consideration 4: An FMI should have rules, procedures, and contracts that are enforceable in all relevant jurisdictions. There should be a high degree of certainty that actions taken by the FMI under such rules and procedures will not be voided, reversed, or subject to stays.

There is a high degree of certainty that the most critical actions taken by CDCC under its rules, procedures, and contracts are enforceable in the relevant jurisdictions and will not be voided, reversed, or subject to stays.

Key consideration 5: An FMI conducting business in multiple jurisdictions should identify and mitigate the risks arising from any potential conflict of laws across jurisdictions.

CDCC currently conducts business in Canadian provinces only. Every Canadian province has conflict of law rules and there is a high level of legal certainty in this regard in all provinces. CDCC's activities never gave rise to a practical difficulty. CDCC continues to keep abreast of the latest regulatory developments in this regard.

Principle 2: Governance

Principle

An FMI should have governance arrangements that are clear and transparent, promote the safety and efficiency of the FMI, and support the stability of the broader financial system, other relevant public interest considerations, and the objectives of relevant stakeholders.

Disclosure

Key consideration 1: An FMI should have objectives that place a high priority on the safety and efficiency of the FMI and explicitly support financial stability and other relevant public interest considerations.

CDCC is a for-profit legal entity, separate and independent from its shareholders. Maintaining the safety and efficiency of CDCC's operation is a primary objective of CDCC's Risk Management framework formed by the Rules, Operations, Risk and Default Management Manuals, as amended from time to time. The CDCC, operated by CDCC, has been designated by the Bank of Canada as being of systemic importance under the PCSA. CDCC is thus under the obligation, and subject to close oversight by the Bank of Canada, to operate in such a manner that risk is properly controlled and to promote efficiency and stability in the Canadian financial system. Furthermore, CDCC's public interest mandate is embedded in its recognition orders and subject to annual reporting to some of its regulators.

Key consideration 2: An FMI should have documented governance arrangements that provide clear and direct lines of responsibility and accountability. These arrangements should be disclosed to owners, relevant authorities, participants, and, at a more general level, the public.

CDCC has governance arrangements that provide clear and direct lines of responsibility in the form of its committees and their associated charters, which are disclosed to all stakeholders.

The Board of Directors is independent and carries out its mandate directly as well as through the Risk and Audit Committee and the Governance Committee. The Board of Directors can also seek or obtain advice and non-binding recommendations from the Human Resources Committee established by TMX Group, the Corporation's parent company.

Key consideration 3: The roles and responsibilities of an FMI's board of directors (or equivalent) should be clearly specified, and there should be documented procedures for its functioning, including procedures to identify, address, and manage member conflicts of interest. The board should review both its overall performance and the performance of its individual board members regularly.

The roles and responsibilities of CDCC's Board of Directors are clearly specified in its Charter and Statement of Corporate Governance, which document its functioning, including procedures to identify, address, and manage member conflicts of interest. Those documents are publicly available on CDCC's website. The

Board of Directors reviews both its overall performance and the performance of individual Board members regularly.

Key consideration 4: The board should contain suitable members with the appropriate skills and incentives to fulfil its multiple roles. This typically requires the inclusion of non-executive board member(s).

As explained in the Board Charter and Statement of Corporate Governance, the CDCC Board of Directors includes suitable members, including independent board members, that have the appropriate skills and incentives to fulfill their multiple responsibilities, as defined and required under CDCC recognition orders. Currently, CDCC has twelve elected directors, six of which were determined to be independent by the Board of CDCC. A list of the directors of CDCC is publicly available on CDCC's website.

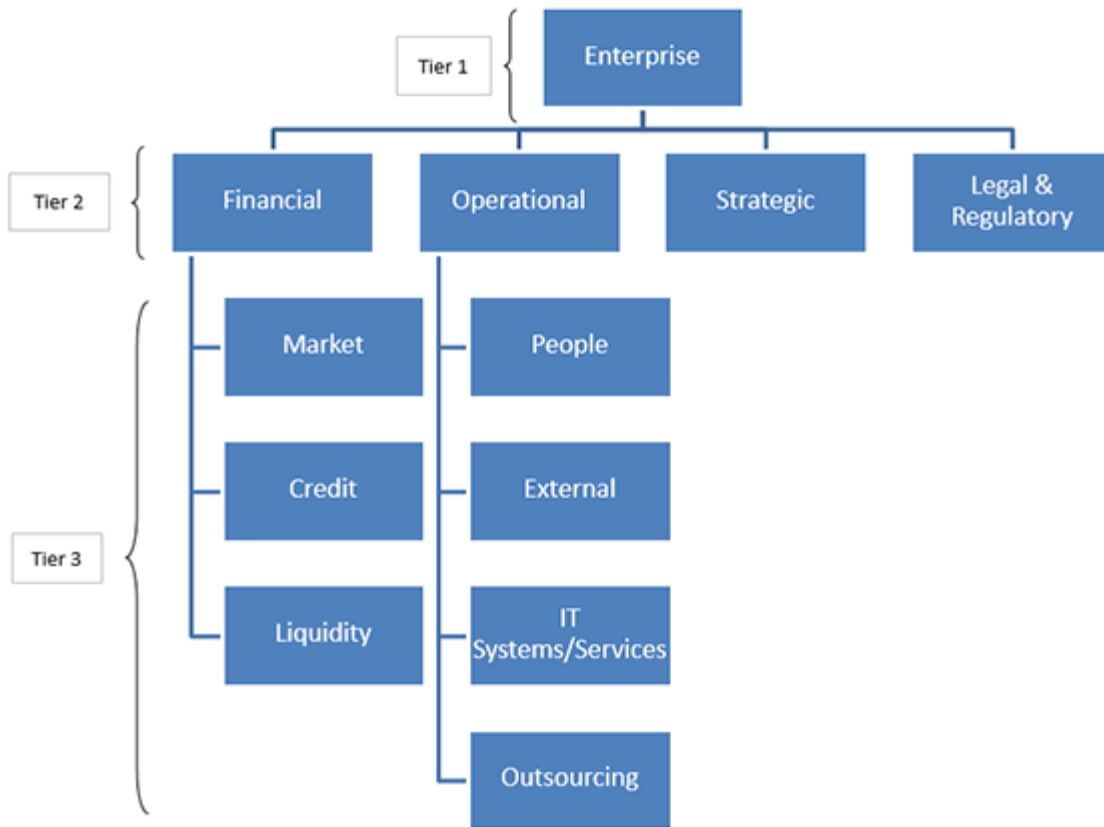
Key consideration 5: The roles and responsibilities of management should be clearly specified. An FMI's management should have the appropriate experience, a mix of skills, and the integrity necessary to discharge their responsibilities for the operation and risk management of the FMI.

The roles and responsibilities of CDCC's management are clearly specified. CDCC's management and officers have the appropriate mix of experience and skill-set and the integrity necessary to discharge their responsibilities; all Officers of the Corporation must be fit and proper under the AMF recognition order. The boundaries between the Board of Directors and the management responsibilities are established by the Board of Directors that oversees the performance of the management.

Key consideration 6: The board should establish a clear, documented risk-management framework that includes the FMI's risk-tolerance policy, assigns responsibilities and accountability for risk decisions, and addresses decision making in crises and emergencies. Governance arrangements should ensure that the risk-management and internal control functions have sufficient authority, independence, resources, and access to the board.

CDCC Risk Management Policy Structure is aligned with its parent company's structure. TMX Group's risk policies are structured in a hierarchy composed of three tiers.

The ERM policy is considered as a Tier 1 policy, and governs Tier 2 and Tier 3 policies. The second tier (Tier 2) is made up of four policies covering financial, operational, strategic, and legal and regulatory risks. The third tier expands on both the financial risk policy (including market, credit, and liquidity risks) and the operational policy (including people, systems/IT, and external risks).



The current risk management framework at CDCC is included within the Rules, Operations, Risk and Default manuals. The CDCC Board of Directors has established a Risk and Audit Committee to take steps on its behalf as necessary to assist the Board in fulfilling its oversight responsibilities.

The CDCC Board of Directors approves, annually, the Risk Appetite Statement (“RAS”) and ERM Policy and oversees the adequacy and operating effectiveness of CDCC’s ERM program. CDCC’s senior management, either directly or through the RMC, ensures the appropriate design and management of the ERM and appropriate and timely reporting.

Key consideration 7: The board should ensure that the FMI’s design, rules, overall strategy, and major decisions reflect appropriately the legitimate interests of its direct and indirect participants and other relevant stakeholders. Major decisions should be clearly disclosed to relevant stakeholders and, where there is a broad market impact, the public.

CDCC welcomes stakeholder feedback through the Risk Management Advisory Committee (“RMAC”) and the User Groups for Derivatives and Fixed Income Clearing Members. Stakeholders’ views are solicited and taken into consideration for any significant changes regarding CDCC’s design, rules, or functioning. CDCC

discloses major decisions made by its Board of Directors, in accordance with applicable legislation and regulations, as well as its recognition orders and Bank of Canada regulatory oversight agreement, by means of notices to members, its Clearing Members and regulatory extranets, and on its website, as necessary.

Principle 3: Framework for the Comprehensive Management of Risks

Principle

An FMI should have a sound risk-management framework for comprehensively managing legal, credit, liquidity, operational, and other risks.

Disclosure

Key consideration 1: An FMI should have risk-management policies, procedures, and systems that enable it to identify, measure, monitor, and manage the range of risks that arise in or are borne by the FMI. Risk-management frameworks should be subject to periodic review.

CDCC has adopted an ERM framework to enable the comprehensive management of all of the risks to which it is exposed. As part of the broader TMX Group, the ERM framework is a shared framework across TMX entities and is sufficiently flexible to ensure that the specificities of the CDCC risk management function are considered.

The fundamental building block to the ERM program is the definition of CDCC's Risk Appetite Statement ("RAS") that articulates the nature and amount of risk that CDCC is willing to accept across risk types. The RAS, when coupled with the risk management policies, form the core of the ERM framework with the latter being organized along the lines of the Key Enterprise Risks ("KER") that CDCC faces. CDCC has devised risk management processes that define how each of the KERs, and the associated sub-risks, are identified, measured, monitored, and reported. The KERs are broadly defined as credit risk, market risk, liquidity risk, operational risk, strategic risk, legal risk, and reputational risk.

CDCC employs various systems and measurement approaches to the quantification of its risks ranging from the annual risk assessment exercise performed by CDCC management, to the classification of risk events according to its Risk-events reporting framework. For all types of incidents and near misses, CDCC aggregates the potential impact that allows it to provide a holistic indicator across all types of risks.

The RAS as well as the risk management policies are revised by the CDCC internal Risk Evaluation Committee ("REC") and the RMC, then approved by the CDCC Board of Directors at least annually, or subsequent to a significant change to the risk profile of the CDCC.

Key consideration 2: An FMI should provide incentives to participants and, where relevant, their customers to manage and contain the risks they pose to the FMI.

CDCC has developed a comprehensive incentivization *structure vis-à-vis* its Clearing Members and communicated details regarding these incentives via multiple fora, including its Rules, Notices to Members, as well as through the various industry working groups that have been developed.

These incentives range from credit risk introduced, to the clearing system reflected through the contingent liability in the Clearing Fund, to operational delays and the associated fine structures. Furthermore, CDCC is currently articulating a more detailed set of Participation Requirements, which will include operational and technology risks that Clearing Members will be required to manage against.

Key consideration 3: An FMI should regularly review the material risks it bears from and poses to other entities (such as other FMIs, settlement banks, liquidity providers, and service providers) as a result of interdependencies and develop appropriate risk-management tools to address these risks.

CDCC regularly reviews the material risks that it poses to other entities and takes mitigating actions where appropriate. As part of its liquidity management program, CDCC reviews its intraday liquidity arrangements so that it limits the settlement congestion that it may introduce at the Securities Settlement System (“SSS”) employed for its securities settlement process. Furthermore, CDCC has diversified its settlement bank providers to limit the potential liquidity impacts at one particular settlement bank. Additionally, CDCC monitors its exposure to Settlement Banks and Approved Depositories. As part of its ERM program, CDCC has devised (and continues to evolve) Key Performance and Key Risk Indicators (“KPIs” and “KRIs”) to measure these material risks and the effectiveness of the tools used to measure these risks.

Key consideration 4: An FMI should identify scenarios that may potentially prevent it from being able to provide its critical operations and services as a going concern and assess the effectiveness of a full range of options for recovery or orderly wind-down. An FMI should prepare appropriate plans for its recovery or orderly wind-down based on the results of that assessment. Where applicable, an FMI should also provide relevant authorities with the information needed for purposes of resolution planning.

CDCC has implemented a recovery plan that contains specific scenarios in this regard including credit, liquidity and operational events. In accordance with its regulatory requirements, CDCC has established a comprehensive and effective Recovery Plan that is reviewed and approved annually by its Board of Directors. The plan ensures that CDCC can continue to provide critical services and can replenish any financial resources that it may employ in implementing such a plan.

Principle 4: Credit Risk

Principle

An FMI should effectively measure, monitor, and manage its credit exposures to participants and those arising from its payment, clearing, and settlement processes. An FMI should maintain sufficient financial resources to cover its credit exposure to each participant fully with a high degree of confidence. In addition, a CCP that is involved in activities with a more complex risk profile or that is systemically important in multiple jurisdictions should maintain additional financial resources sufficient to cover a wide range of potential stress scenarios that should include, but not be limited to, the default of the two participants and their affiliates that would potentially cause the largest aggregate credit exposure to the CCP in extreme but plausible market conditions. All other CCPs should maintain additional financial resources sufficient to cover a wide range of potential stress scenarios that should include, but not be limited to, the default of the participant and its affiliates that would potentially cause the largest aggregate credit exposure to the CCP in extreme but plausible market conditions.

Disclosure

Key consideration 1: An FMI should establish a robust framework to manage its credit exposures to its participants and the credit risks arising from its payment, clearing, and settlement processes. Credit exposure may arise from current exposures, potential future exposures, or both.

As part of its ERM program, CDCC has developed a robust and comprehensive framework to manage the credit risks that it has identified. As part of the framework, sources of credit risk are reviewed on an annual basis and the resulting credit risk appetite, principles, and risk management processes are affirmed by the Board of Directors on a similar frequency. Through the review process, the supporting policies and documentation are revised to ensure that they remain consistent and reflective of industry evolving business practices. Forming part of this ERM program is a dedicated CDCC Credit Risk Policy whose foundations are the numerous frameworks that describe the various risks and risk management processes that contribute to CDCC's overall credit risk exposure. Fundamentally, Credit Risk Policy is composed of two key elements: 1) sufficiency of financial resources and 2) credit exposure oversight.

Key consideration 2: An FMI should identify sources of credit risk, routinely measure and monitor credit exposures, and use appropriate risk-management tools to control these risks.

CDCC identifies the sources of its credit risk at a minimum on an annual basis. Sources of credit risk fall into three broad-based categories: 1) credit risk to direct participants, 2) credit risk inherent in the collateral used by direct participants to cover margin and/or other requirements, and 3) credit risk to commercial banks used as settlement agents and/or liquidity providers.

- 1) Credit risk to direct participants is measured and monitored, as a first step, through the periodic review of capital requirements against the minimum standards required by the CDCC through its

membership standards. Credit risk to direct participants, settlement banks, and/or liquidity providers is also monitored through a quarterly creditworthiness analysis. Furthermore, credit risk derived through transactional activity is measured on a daily basis and is secured through the use of collateral provided by the direct participants.

- 2) Credit risk inherent in collateral is measured and monitored against the credit standards set within the collateral framework adopted by the CDCC. On a daily basis, CDCC will measure the collateral provided by direct participants against the collateral mix policy that is designed to mitigate against credit risk, among other risks.
- 3) Credit risk to settlement banks and/or liquidity providers is largely focused on a periodic review of financial statements against the requirements of such entities, which are maintained as part of policy or Rule.

Key consideration 3: A payment system or SSS should cover its current and, where they exist, potential future exposures to each participant fully with a high degree of confidence using collateral and other equivalent financial resources (see Principle 5 on collateral). In the case of a DNS payment system or DNS SSS in which there is no settlement guarantee but where its participants face credit exposures arising from its payment, clearing, and settlement processes, such an FMI should maintain, at a minimum, sufficient resources to cover the exposures of the two participants and their affiliates that would create the largest aggregate credit exposure in the system.

Not applicable.

Key consideration 4: A CCP should cover its current and potential future exposures to each participant fully with a high degree of confidence using margin and other prefunded financial resources (see Principle 5 on collateral and Principle 6 on margin). In addition, a CCP that is involved in activities with a more-complex risk profile or that is systemically important in multiple jurisdictions should maintain additional financial resources to cover a wide range of potential stress scenarios that should include, but not be limited to, the default of the two participants and their affiliates that would potentially cause the largest aggregate credit exposure for the CCP in extreme but plausible market conditions. All other CCPs should maintain additional financial resources sufficient to cover a wide range of potential stress scenarios that should include, but not be limited to, the default of the participant and its affiliates that would potentially cause the largest aggregate credit exposure for the CCP in extreme but plausible market conditions. In all cases, a CCP should document its supporting rationale for, and should have appropriate governance arrangements relating to, the amount of total financial resources it maintains.

Current and potential future exposures are computed and covered through the collection of Variation Margin (“VM”) in the first instance and Initial Margin (“IM”) in the latter, on at least a daily basis. Both VM and IM are collected from Clearing Members, either in cash or via a collateralization scheme, and IM is set to achieve a coverage target of at least 99%. Both VM and IM are secured via acceptable margin deposits and are maintained at either the central bank (for cash collateral), pledged to CDCC via the CDS settlement system, or held at approved custodians in segregated accounts subject to control agreements. The Clearing

Member grants to, and in favor of CDCC, a first ranking pledge and security interest on all property deposited as Margin Deposits as defined under CDCC's Rules.

As a CCP designated as systemically important in a single jurisdiction and currency, CDCC maintains additional financial resources in the form of a Clearing Fund that is sized to a Cover 1 plus Affiliates standard. The sizing of the Clearing Fund is determined by subjecting the Clearing Members accounts to extreme but plausible market scenarios so as to determine the largest credit losses beyond the IM provided that would result in an uncovered shortfall. The sufficiency of total financial resources is tested on a daily basis and CDCC reserves the right to re-calibrate both IM and Clearing Fund components to ensure that it continues to meet its Cover 1 plus Affiliates standard.

The governance arrangements that have been adopted are embedded in the ERM framework and involve the elaboration of risk appetite statements, various frameworks for the identification, monitoring and management of risks, as well as monthly reporting to the internal risk management committee (RMC), the external industry risk committee (RMAC), and to the CDCC Board of Directors. Internal risk governance requires that CDCC evaluate the adequacy of its financial resources at the Clearing Member and CCP-level and take appropriate actions in the event that financial resources fall below defined thresholds.

Key consideration 5: A CCP should determine the amount and regularly test the sufficiency of its total financial resources available in the event of a default or multiple defaults in extreme but plausible market conditions through rigorous stress testing. A CCP should have clear procedures to report the results of its stress tests to appropriate decision makers at the CCP and to use these results to evaluate the adequacy of and adjust its total financial resources. Stress tests should be performed daily using standard and predetermined parameters and assumptions. On at least a monthly basis, a CCP should perform a comprehensive and thorough analysis of stress testing scenarios, models, and underlying parameters and assumptions used to ensure they are appropriate for determining the CCP's required level of default protection in light of current and evolving market conditions. A CCP should perform this analysis of stress testing more frequently when the products cleared or markets served display high volatility, become less liquid, or when the size or concentration of positions held by a CCP's participants increases significantly. A full validation of a CCP's risk-management model should be performed at least annually.

CDCC performs daily stress testing which includes Clearing Member exposures as well as the margin collateral that is provided to cover IM and Clearing Fund requirements. The stress testing program is governed by the stress testing framework which defines the various scenarios used for testing, the daily revision against available financial resources as well as the monthly stress testing adequacy process that assesses its effectiveness and its appropriateness. The stress testing results are consolidated and reported to the various committees (RMC, RMAC and the Board of Directors). The stress testing and credit risk frameworks require that independent vetting and validation be performed on at least an annual basis.

Key consideration 6: In conducting stress testing, a CCP should consider the effect of a wide range of relevant stress scenarios in terms of both defaulters' positions and possible price changes in liquidation

periods. Scenarios should include relevant peak historic price volatilities, shifts in other market factors such as price determinants and yield curves, multiple defaults over various time horizons, simultaneous pressures in funding and asset markets, and a spectrum of forward-looking stress scenarios in a variety of extreme but plausible market conditions.

CDCC's stress testing framework includes various scenarios, including historical and hypothetical scenarios and inclusive of all Clearing Member positions, peak price changes, and volatilities. Defaults of affiliated Clearing Members are considered in the stress testing framework as CDCC meets a Cover 1 plus Affiliates standard.

Key consideration 7: An FMI should establish explicit rules and procedures that address fully any credit losses it may face as a result of any individual or combined default among its participants with respect to any of their obligations to the FMI. These rules and procedures should address how potentially uncovered credit losses would be allocated, including the repayment of any funds an FMI may borrow from liquidity providers. These rules and procedures should also indicate the FMI's process to replenish any financial resources that the FMI may employ during a stress event, so that the FMI can continue to operate in a safe and sound manner.

CDCC has existing rules that address how Clearing Fund assessments are performed on surviving Clearing Members in the unlikely event that pre-funded financial resources are extinguished further to a Clearing Member default. Clearing Fund assessments are performed on a pro-rata basis and are a function of each survivor's Clearing Fund contribution at the point of default. Repayment of funds follows the reverse order of the default waterfall. Moreover, CDCC Recovery Plan and Rules provide for additional tools to absorb losses beyond the Default Waterfall.

Principle 5: Collateral

Principle

An FMI that requires collateral to manage its or its participants' credit exposure should accept collateral with low credit, liquidity, and market risks. An FMI should also set and enforce appropriately conservative haircuts and concentration limits.

Disclosure

Key consideration 1: An FMI should generally limit the assets it (routinely) accepts as collateral to those with low credit, liquidity, and market risks.

CDCC's collateral framework, a key component of its ERM framework, lays down the criteria that CDCC uses to determine the acceptability of collateral. The collateral framework considers market, credit, liquidity, and operational risks as the key risk factors. The collateral framework is reviewed on at least an annual basis. CDCC's Rules also provide for the acceptance of collateral on an exceptional basis, however, these forms of collateral should not depart markedly from the criteria as established in the collateral framework and would require internal approval prior to being accepted.

Collateral policy limits are set within the framework and are monitored daily. Specifically, wrong-way risk is managed by explicitly prohibiting the acceptance of collateral from Clearing Members whose credit risk is highly correlated with the specific collateral.

As of March 2020, CDCC only accepts cash collateral for the Clearing Fund to mitigate the liquidity risk associated with the closing of positions in the unlikely event of a Clearing Member default.

Key consideration 2: An FMI should establish prudent valuation practices and develop haircuts that are regularly tested and take into account stressed market conditions.

Collateral that is pledged to CDCC is re-valued intra-day (every time margin requirements are calculated) and haircuts are tested on a monthly basis for their adequacy. CDCC may also, at its sole discretion, determine its own value for collateral where market prices are deemed inadequate under market conditions.

Key consideration 3: In order to reduce the need for procyclical adjustments, an FMI should establish stable and conservative haircuts that are calibrated to include periods of stressed market conditions, to the extent practicable and prudent.

CDCC has adopted procyclicality adjustments as a means of establishing stable haircuts. These adjustments include two fundamental components: 1) an exponentially weighted moving average model and 2) a floor

calibrated to historical stressed conditions. The resulting haircuts are then compared to the haircuts included in its liquidity arrangements to limit any potential for a liquidity drain when accessing such arrangements. Haircuts are tested for adequacy on a frequent basis and are revised at least semi-annually.

Key consideration 4: An FMI should avoid concentrated holdings of certain assets where this would significantly impair the ability to liquidate such assets quickly without significant adverse price effects.

CDCC's collateral framework includes consideration for multiple risk factors that may affect the value of collateral in the event of a Clearing Member default. One of the key factors includes (trading) liquidity risk and sets minimum standards for collateral acceptability in stock outstanding and trading liquidity. The collateral policy also includes limits on the size of any specific collateral that may be accepted from any one particular Clearing Member.

The collateral framework, including the associated limits, is reviewed at least annually for its appropriateness and adequacy. The adequacy of each Clearing Member's collateral composition is reviewed on a daily basis and any breach is reported to the CDCC Risk Management Committee.

Key consideration 5: An FMI that accepts cross-border collateral should mitigate the risks associated with its use and ensure that the collateral can be used in a timely manner.

In addition to other forms of acceptable collateral, CDCC accepts USD bonds and a selection of Non-CAD currencies as collateral to meet the VM and IM requirements. Haircuts on USD collateral are adjusted to reflect the foreign exchange risk that would be incurred upon liquidation and conversion into CAD to meet CAD denominated losses. Haircut on Non-CAD currencies are assessed based on historical returns of foreign exchange rates and using an exponentially weighted moving average ("EWMA") to capture the corresponding volatility.

As is the case for CAD collateral, USD collateral is pledged to CDCC at acceptable depositories in Canada thereby minimizing any legal risks that are inherent in cross-border transactions. Non-CAD currencies are deposited with commercial banks that are within CDCC's counterparty credit and operational risk appetite. Finally, CDCC's liquidity arrangements include support for USD and Non-CAD currencies collateral thereby ensuring timely liquidity if necessary.

Key consideration 6: An FMI should use a collateral management system that is well-designed and operationally flexible.

CDCC's collateral management system is linked to its clearing system on a near real-time basis and is capable of managing Clearing Member limits on a similar frequency. As CDCC does not currently support investment operations, which rely on the re-use of Clearing Member collateral, tracking of collateral re-used for the purposes of obtaining liquidity in the unlikely event of a Clearing Member default is managed through existing processes.

As the collateral framework includes consideration for operational risk, any changes to the collateral management system should be assessed through the annual revision of the framework to ensure that the system is capable of accommodating such changes. Finally, as part of the annual default simulation exercises, the capacity to manage collateral during times of market stress is validated.

Principle 6: Margin

Principle

A CCP should cover its credit exposures to its participants for all products through an effective margin system that is risk-based and regularly reviewed.

Disclosure

Key consideration 1: A CCP should have a margin system that establishes margin levels commensurate with the risks and particular attributes of each product, portfolio, and market it serves.

The Market Risk Policy, which is a key component of CDCC's overall ERM program, defines the key sources of market risk, the measurement approaches used to quantify these risks and the associated mitigation measures taken to ensure that CDCC remains in line with corporate policies and risk appetite.

CDCC provides CCP services to two distinct markets: 1) the Canadian exchange-traded derivatives market and 2) the over-the-counter market, which includes equity derivatives and fixed income products. CDCC has adopted the Delta-Hedge margining model for derivatives and the Historical Value-At-Risk ("HVaR" model for fixed income transactions such as repurchase agreements and cash trades. These models operate within the SOLA-RN component of CDCS for all of its cleared products and the margin system is calibrated with the market risk measures that are made publicly available in its Risk Manual and are also consistent with its policies and risk appetite statements.

The credit exposure, with the market risk measures, is composed of VM and IM. For all markets serviced, VM is measured and called at least daily while IM is called at least four times per day and is designed to cover the potential future exposure that the CDCC is exposed to in the event of a Clearing Member default. IM is calibrated at the product level and reflects the volatility and closeout horizons that CDCC deems pertinent at the product level. Furthermore, where appropriate and deemed necessary as per the risk appetite of the organization, additional margin surcharges are levied upon Clearing Members that introduce additional risk to the system. These surcharges include, but are not limited to, market liquidity risk, mismatched settlement risk, and specific wrong-way risk.

Key consideration 2: A CCP should have a reliable source of timely price data for its margin system. A CCP should also have procedures and sound valuation models for addressing circumstances in which pricing data are not readily available or reliable.

The sources of data that are considered as part of its risk management processes include readily available market data that emanate from the markets it serves. This includes the exchange-traded market for its derivatives services and data that originates from relevant Alternative Trading Systems "ATS", which are considered representative of market values for the OTC markets. Furthermore, for data that is not readily available, proxies are derived from related market data through well-established theoretical financial

principles. Data used to establish IM is derived through price changes from the relevant markets such that volatility estimates are representative of underlying price data.

Moreover, as part of its Model Validation Framework, CDCC ensures that data used for analysis purposes and those used in production are adequate and reliable.

Key consideration 3: A CCP should adopt initial margin models and parameters that are risk-based and generate margin requirements sufficient to cover its potential future exposure to participants in the interval between the last margin collection and the close out of positions following a participant default. Initial margin should meet an established single-tailed confidence level of at least 99 percent with respect to the estimated distribution of future exposure. For a CCP that calculates margin at the portfolio level, this requirement applies to each portfolio's distribution of future exposure. For a CCP that calculates margin at more-granular levels, such as at the subportfolio level or by product, the requirement must be met for the corresponding distributions of future exposure. The model should (a) use a conservative estimate of the time horizons for the effective hedging or close out of the particular types of products cleared by the CCP (including in stressed market conditions), (b) have an appropriate method for measuring credit exposure that accounts for relevant product risk factors and portfolio effects across products, and (c) to the extent practicable and prudent, limit the need for destabilising, procyclical changes.

The IM models adopted by CDCC set potential future exposure at the individual product level and sub-account level. CDCC has a model for derivatives and another model for fixed income transactions. The models also set rules regarding aggregation of IM across sub-accounts, accounts, and product types to determine the total IM requirement at the Clearing Member level. The IM model is designed to achieve a 99% coverage target at the Clearing Member level, after accounting for the aggregation rules.

The key assumption embedded in the derivatives IM model is that price changes follow a normal distribution for the majority of the products cleared by CDCC. In the case of the short-term interest rate (STIR) futures contracts as well as Dividend Futures contracts, the IM model assumes that price changes follow a Student t-Distribution, which allows for a better representation of returns distribution profile of those products.

For fixed-income trades, the IM model is an historical value-at-risk model with a coverage target of at least 99%. The IM model is based on shocks on the underlying risk factors, which are Canadian federal zero-coupon rates, provincial zero-coupon rates, and inflation rates.

The closeout horizon is a key parameter in the IM level. For all of its contracts, CDCC sets this amount to a two-day horizon. CDCC incorporates the liquidity risk (risk of longer liquidation time due to market liquidity) in its Market Liquidity Risk ("MLR") add-on.

CDCC has adopted a pro-cyclicality adjustment to its IM models that materializes through a floor. This adjustment ensures that IM cannot decrease below a set threshold and cannot spike overtly in times of market stress. The floor component is calibrated to a 10-year historical window.

For derivatives IM, CDCC also applies a smoothing parameter calibrated to a one-year historical window. The IM component is supplemented by an SVaR component which both enhances anti-procyclicality features of the model and ensures that the IM model reflects both historical stressed market conditions and short-term historical volatility.

For fixed income IM, CDCC applies an IM buffer to account for the difference between current and historical levels of volatility. This buffer prevents overly large decreases in Initial Margin requirements during periods of low volatility.

CDCC has identified that the only source of specific wrong-way risk to which it is exposed is through the equity options and Share Futures markets. The application of a margin surcharge that represents the full strike value of the short put positions cleared by Clearing Members on options on their own equities mitigates such risk. For long Share Future positions with an underlying on their own equities, the surcharge is equal to the settlement value.

Key consideration 4: A CCP should mark participant positions to market and collect variation margin at least daily to limit the build-up of current exposures. A CCP should have the authority and operational capacity to make intraday margin calls and payments, both scheduled and unscheduled, to participants.

During the regular clearing cycle, CDCC currently performs four margin calls per day related to IM and VM. Insofar as VM calls are concerned, the end of day call is automatic and is applicable to all Clearing Members, whereas the intraday VM call is triggered only for Clearing Members that breach defined thresholds. These thresholds are defined with CDCC policies and reflect the risk appetite for unsecured intraday (overnight) exposure.

Moreover, with the recent introduction of the overnight clearing cycle that aims to support MX extended trading hours, CDCC performs an hourly monitoring between 9:00 pm (t-1) and 6:00 am based on real-time positions and prices which could trigger a margin call should a Clearing Member' exposure increase beyond pre-defined risk thresholds.

CDCC's Rules grant CDCC the right to effect as many intraday calls as it deems necessary, including unscheduled, to mitigate the build-up of risk and to ensure the stability of the markets it serves.

Key consideration 5: In calculating margin requirements, a CCP may allow offsets or reductions in required margin across products that it clears or between products that it and another CCP clear, if the risk of one product is significantly and reliably correlated with the risk of the other product. Where two or more CCPs are authorised to offer cross-margining, they must have appropriate safeguards and harmonised overall risk-management systems.

In computing overall margin requirements, CDCC does permit a certain level of offsets between products and risk factors that demonstrate a high level of correlation across long time horizons. It should be noted that this is restricted to position exposures that share a similar closeout horizon. Furthermore, the margin offsetting approach considers proximity of individual risk factors across the term structure of interest rates. CDCC does not currently engage in any cross-margining arrangements with other CCPs.

Key consideration 6: A CCP should analyse and monitor its model performance and overall margin coverage by conducting rigorous daily backtesting – and at least monthly, and more-frequent where appropriate, sensitivity analysis. A CCP should regularly conduct an assessment of the theoretical and empirical properties of its margin model for all products it clears. In conducting sensitivity analysis of the model’s coverage, a CCP should take into account a wide range of parameters and assumptions that reflect possible market conditions, including the most-volatile periods that have been experienced by the markets it serves and extreme changes in the correlations between prices.

CDCC’s backtesting framework is a key component of its overall validation process. Backtesting is performed daily for two primary reasons: 1) at the Clearing Member level to assess the historical coverage requirement and 2) at the product level and theoretical level to assess the statistical performance of the margin models.

CDCC governance includes a model performance component that is akin to a traffic light approach for the identification of model breaches. In addition, sensitivity analysis is performed whereby key model parameters are stressed to ascertain and document potential limitations in the existing IM models. Sensitivity analysis is performed on a monthly basis. The model performance measures are reported to the RMC as well as to its industry Risk Management Advisory Committee (“RMAC”) on a frequent basis.

Key consideration 7: A CCP should regularly review and validate its margin system.

The CDCC Model Validation Framework sets the expectation in terms of ongoing validation and independent vetting. As such, CDCC performs a regular review of its models on a monthly and annual basis. Furthermore, an independent validation is performed according to the Model Validation Framework. These reviews include both an empirical and theoretical review.

Internal risk management governance requires that the results of these reviews be presented to either the RMC or the RMAC and, depending on the results and circumstances, may result in a material review of the models and/or parameters in question. The independent vetting report is also provided to the Risk & Audit Committee of the Board of Directors.

Principle 7: Liquidity Risk

Principle

An FMI should effectively measure, monitor, and manage its liquidity risk. An FMI should maintain sufficient liquid resources in all relevant currencies to effect same-day and, where appropriate, intraday and multi-day settlement of payment obligations with a high degree of confidence under a wide range of potential stress scenarios that should include, but not be limited to, the default of the participant and its affiliates that would generate the largest aggregate liquidity obligation for the FMI in extreme but plausible market conditions.

Disclosure

Key consideration 1: An FMI should have a robust framework to manage its liquidity risks from its participants, settlement banks, nostro agents, custodian banks, liquidity providers, and other entities.

As part of its ERM program, CDCC has developed a robust and comprehensive framework to manage the liquidity risks that it has identified. As part of the framework, sources of liquidity risk are reviewed on an annual basis and the resulting liquidity risk appetite, principles, and risk management processes are affirmed by the Board of Directors on a similar frequency. As part of the review process, the supporting policies and documentation are revised so as to ensure that they remain consistent and reflective of the evolving business practices. Forming part of this ERM program is a dedicated Liquidity Risk Policy whose foundation is the framework that describes the various risks and risk management processes that contribute to mitigating CDCC's overall liquidity risk exposure. Fundamentally, liquidity risk management is composed of two key elements: 1) sufficiency of liquid resources assessment and 2) liquidity risk oversight.

Liquidity risk at CDCC arises from the daily settlement of cash flows and the funding pressures inherent in the securities settlement process. The latter will occur on a daily basis but will also peak on quarterly cycles when exchange-traded derivatives are due for final settlement. For liquidity risk management purposes, CDCC will measure its liquidity exposures to include its largest Clearing Member exposure including any and all affiliates that are also Clearing Members.

Key consideration 2: An FMI should have effective operational and analytical tools to identify, measure, and monitor its settlement and funding flows on an ongoing and timely basis, including its use of intraday liquidity.

All of CDCC's potential sources of liquidity risk are documented within the Liquidity Risk Policy along with the associated processes for measurement, monitoring, and reporting. CDCC has developed a suite of analytical tools that help measure CDCC's risk exposure on a timely basis. These tools include the measurement of intraday liquidity exposures that are incurred as part of the securities settlement process and the daily measurement of cash flows due to, and from, the CDCC as part of the daily settlement

process for the exchange-traded derivatives service. Finally, CDCC also measures, when circumstances warrant, the daily funding needs that arise due to settlement delivery failures in the fixed income services.

These tools are instrumental in the liquidity risk management process as they are relied upon to measure exposures relative to qualifying liquid resources and its liquidity risk appetite. Any breaches to internal policy limits trigger adjustments to liquidity risk mitigation strategies, such as the size of commercial bank liquidity facilities.

Key consideration 3: A payment system or SSS, including one employing a DNS mechanism, should maintain sufficient liquid resources in all relevant currencies to effect same-day settlement, and where appropriate intraday or multiday settlement, of payment obligations with a high degree of confidence under a wide range of potential stress scenarios that should include, but not be limited to, the default of the participant and its affiliates that would generate the largest aggregate payment obligation in extreme but plausible market conditions.

Not applicable

Key consideration 4: A CCP should maintain sufficient liquid resources in all relevant currencies to settle securities-related payments, make required variation margin payments, and meet other payment obligations on time with a high degree of confidence under a wide range of potential stress scenarios that should include, but not be limited to, the default of the participant and its affiliates that would generate the largest aggregate payment obligation to the CCP in extreme but plausible market conditions. In addition, a CCP that is involved in activities with a more-complex risk profile or that is systemically important in multiple jurisdictions should consider maintaining additional liquidity resources sufficient to cover a wider range of potential stress scenarios that should include, but not be limited to, the default of the two participants and their affiliates that would generate the largest aggregate payment obligation to the CCP in extreme but plausible market conditions.

One of the key objectives of CDCC's central counterparty services is to ensure that it maintains sufficient liquid resources to cover the default of one Clearing Member and its affiliates that would potentially cause the largest aggregate liquidity exposure to CDCC in extreme but plausible market conditions. More precisely, CDCC shall maintain sufficient liquid resources to effect multi-day settlement of payment obligations. Under normal conditions, sufficient qualifying liquid resources should cover liquidity exposure with a high level of confidence over a period of one year. Under stressed conditions, total liquid resources should cover liquidity exposure at all times. CDCC's primary source of potential liquidity exposure arises from the payment obligations of a defaulting Clearing Member. Most of the exposure originates principally from fixed income securities and equities settlements in addition to futures mark-to-market in stressed conditions. There are other marginal sources of liquidity risk, namely cash payments arising from: repo rate mark-to-market, the exercise of cash settled options, and the payment of the option premium. CDCC predominantly conducts its money settlement in Canadian dollars. Payments in U.S. dollars are restricted to cases of corporate actions that impact the deliverable of an option contract.

As a CCP designated as systemically important in a single jurisdiction and currency, CDCC is not currently involved in activities with a more-complex risk profile or that is systemically important in multiple jurisdictions. Hence, CDCC only maintains additional liquidity resources sufficient to a Cover 1 plus affiliate standard.

Key consideration 5: For the purpose of meeting its minimum liquid resource requirement, an FMI's qualifying liquid resources in each currency include cash at the central bank of issue and at creditworthy commercial banks, committed lines of credit, committed foreign exchange swaps, and committed repos, as well as highly marketable collateral held in custody and investments that are readily available and convertible into cash with prearranged and highly reliable funding arrangements, even in extreme but plausible market conditions. If an FMI has access to routine credit at the central bank of issue, the FMI may count such access as part of the minimum requirement to the extent it has collateral that is eligible for pledging to (or for conducting other appropriate forms of transactions with) the relevant central bank. All such resources should be available when needed.

Qualifying liquid resources should be highly reliable and have same-day availability. The Bank of Canada Policy Guidance on liquidity risk identifies the assets that are considered qualifying liquid resources and defines standards for arrangements with liquidity providers to be considered as qualifying liquid resources. For the purpose of meeting its minimum liquid resource requirement under normal market conditions, CDCC's qualifying liquid resources are composed of:

- I. Cash; and
- II. Committed and uncommitted liquidity facilities eligible under the Bank of Canada Policy Guidance on liquidity risk.

Under stressed market conditions, CDCC may supplement its qualifying liquid resources with other forms of liquid resources to meet the requirements.

As such, the size and composition of the qualifying liquid resources is variable as it is dependent on pre-funded collateral as well as on the size of CDCC's pre-arranged funding sources. It should be noted that CDCC's pre-arranged funding arrangements are structured so as to provide for resizing on a quarterly basis, thereby ensuring that CDCC meets its Cover 1 plus Affiliates standards at any point in time.

As of March 2020, the only type of collateral eligible for CDCC's Clearing Fund is Cash. This cash collateral requirement has been implemented to ensure that CDCC has Qualified Liquidity Resources "QLRs" sufficient to meet the PFMI Cover 1 Liquidity standard.

Key consideration 6: An FMI may supplement its qualifying liquid resources with other forms of liquid resources. If the FMI does so, then these liquid resources should be in the form of assets that are likely to be saleable or acceptable as collateral for lines of credit, swaps, or repos on an ad hoc basis following a default, even if this cannot be reliably prearranged or guaranteed in extreme market conditions. Even if an FMI does not have access to routine central bank credit, it should still take account of what collateral

is typically accepted by the relevant central bank, as such assets may be more likely to be liquid in stressed circumstances. An FMI should not assume the availability of emergency central bank credit as a part of its liquidity plan.

CDCC has implemented its liquidity risk planning to be consistent with the policy guidance received from the Bank of Canada as it pertains to Principle 7. Liquid resources are therefore defined below:

- I. Cash in the possession, custody or control of an FMI are qualifying liquid resources for liquidity exposures denominated in the same currency.

- II. Committed liquidity facilities are qualifying liquid resources for liquidity exposures denominated in the same currency if the following criteria are met:
 - A) Facilities are pre-arranged and fully collateralized.
 - B) There is a minimum of three independent liquidity providers.
 - C) The FMI conducts a level of due diligence that is as stringent as the risk assessment completed for FMI participants.

- III. Uncommitted liquidity facilities are considered qualifying liquid resources for liquidity exposures in Canadian dollars if they meet the following additional criteria:
 - A) Facilities are pre-arranged and fully collateralized.
 - B) There is a minimum of three independent liquidity providers.
 - C) The FMI conducts a level of due diligence that is as stringent as the risk assessment completed for FMI participants.
 - D) The liquidity provider has access to the Bank of Canada's Standing Liquidity Facility [SLF].
 - E) The facility is fully collateralized with SLF-eligible collateral.
 - F) The facility is denominated in Canadian dollars.

Key consideration 7: An FMI should obtain a high degree of confidence, through rigorous due diligence, that each provider of its minimum required qualifying liquid resources, whether a participant of the FMI or an external party, has sufficient information to understand and to manage its associated liquidity risks, and that it has the capacity to perform as required under its commitment. Where relevant to assessing a liquidity provider's performance reliability with respect to a particular currency, a liquidity provider's potential access to credit from the central bank of issue may be taken into account. An FMI should regularly test its procedures for accessing its liquid resources at a liquidity provider.

All of CDCC's pre-arranged funding arrangements that are deemed QLRs involve a consortium of Canadian commercial banks. Each of the pre-arranged funding arrangements involved a detailed due diligence of CDCC's operations as well as the potential risks that may arise when providing CDCC with liquidity in times of stress.

Included as part of its Liquidity Risk Policy is a component of liquidity risk oversight that requires CDCC to monitor the risks associated with each of its liquidity providers. Furthermore, the main pre-arranged funding arrangement was structured to ensure that individual liquidity providers had the option of turning towards the Bank of Canada for funding in the event of a CDCC drawdown. Finally, as part of either daily

operations or through the default management simulations, CDCC periodically tests its access to its pre-arranged funding arrangements.

Key consideration 8: An FMI with access to central bank accounts, payment services, or securities services should use these services, where practical, to enhance its management of liquidity risk.

CDCC maintains a bank account with the Bank of Canada for the purposes of holding cash collateral as well as for the purposes of its daily money settlement activities. At present, there are no other services offered by the Bank of Canada that CDCC qualifies for directly.

Key consideration 9: An FMI should determine the amount and regularly test the sufficiency of its liquid resources through rigorous stress testing. An FMI should have clear procedures to report the results of its stress tests to appropriate decision makers at the FMI and to use these results to evaluate the adequacy of and adjust its liquidity risk-management framework. In conducting stress testing, an FMI should consider a wide range of relevant scenarios. Scenarios should include relevant peak historic price volatilities, shifts in other market factors such as price determinants and yield curves, multiple defaults over various time horizons, simultaneous pressures in funding and asset markets, and a spectrum of forward-looking stress scenarios in a variety of extreme but plausible market conditions. Scenarios should also take into account the design and operation of the FMI, include all entities that might pose material liquidity risks to the FMI (such as settlement banks, nostro agents, custodian banks, liquidity providers, and linked FMIs), and where appropriate, cover a multiday period. In all cases, an FMI should document its supporting rationale for, and should have appropriate governance arrangements relating to, the amount and form of total liquid resources it maintains.

The sufficiency assessment considers liquidity exposures and available liquid resources on a daily basis over a time horizon of one year. The purpose is to measure whether liquidity shortfalls would have occurred under normal and stressed market conditions after considering all resources available to CDCC to manage such event. Liquidity shortfalls are measured at the Clearing Member and affiliates level.

Under normal market conditions, liquidity exposures are compared against the amount of qualifying liquid resources available to CDCC, given the observed market value of the assets used to generate liquidity flows. Under stressed market conditions, total liquid resources should be adjusted to reflect the new cash flow requirement that would be obtained after the simulated price shock. CDCC's stress testing program takes into account historical settlement flows and sets its liquidity exposures to reflect the value of the purchases that it expects to make to complete settlement. This is consistent with a real time gross settlement ("RTGS") model and the market convention that permits delivery failures in securities settlement.

Stress testing is performed on a daily basis with reporting into the CDCC RMC on a monthly basis. In the event that a liquidity shortfall is uncovered, RMC would report the shortfall to the Board of Directors and

execute its liquidity risk mitigation strategies, one of which is a re-sizing of its pre-arranged funding arrangements.

Finally, stress testing assumptions and parameters are reviewed on a monthly basis through a model validation process, and models are subject to an independent validation.

Key consideration 10: An FMI should establish explicit rules and procedures that enable the FMI to effect same-day and, where appropriate, intraday and multiday settlement of payment obligations on time following any individual or combined default among its participants. These rules and procedures should address unforeseen and potentially uncovered liquidity shortfalls and should aim to avoid unwinding, revoking, or delaying the same-day settlement of payment obligations. These rules and procedures should also indicate the FMI's process to replenish any liquidity resources it may employ during a stress event, so that it can continue to operate in a safe and sound manner.

The CDCC liquidity risk management program is structured to meet the Cover 1 plus Affiliates standard and, therefore, qualifying liquid resources are sized to ensure that CDCC can continue to meet its payment obligations on the day of default. The Rules, and specifically the Default Manual, explicitly clarify how pre-arranged funding arrangements are accessed and clarify at what point in the process CDCC has any discretion. The legal agreements supporting the pre-arranged funding arrangements articulate how funds are replenished during a stress event.

Principle 8: Settlement Finality

Principle

An FMI should provide clear and certain final settlement, at a minimum by the end of the value date. Where necessary or preferable, an FMI should provide final settlement intraday or in real time.

Disclosure

Key consideration 1: An FMI's rules and procedures should clearly define the point at which settlement is final.

CDCC's Rules and Operations Manual clearly define the point at which settlement is final and irrevocable. Specifically, the Operations Manual, which is publicly disclosed, articulates the daily timelines associated with the settlement process. Settlement finality is achieved in two distinct ways: 1) through the use of the LYNX for money settlements and/or 2) through the use of a Delivery versus Payment ("DvP") mechanism for securities settlements. In both cases, settlement is final and irrevocable once executed and where this feature is clearly articulated in the Rules. As a designated system under the PCSA, CDCC's settlement rules are valid and binding on its participants. Any action taken pursuant to such rules (including any payment, delivery or rights or remedy with respect to the collateral granted) cannot be reversed, stayed, or set aside notwithstanding anything contrary in any statute or laws of Canada or a province and therefore provide a high degree of legal certainty as to their applicability in the event of a challenge.

Key consideration 2: An FMI should complete final settlement no later than the end of the value date, and preferably intraday or in real time, to reduce settlement risk. An LVPS or SSS should consider adopting RTGS or multiple-batch processing during the settlement day.

CDCC's CCP services include money settlements and securities settlements, covering both the derivatives and fixed income marketplace.

In the latter, CDCC has adopted a RTGS framework coupled with a DvP mechanism to reduce settlement risk; for the exchange-traded markets, CDCC operates in a Deferred Net Settlement ("DNS") mode. When in DNS mode, CDCC executes three intraday batches per day and Clearing Members remain accountable for settlement in accordance with the timelines provided in the Operations Manual.

In both RTGS and DNS cases, settlement occurs prior to the end of value date with non-settlement being one potential trigger for default. Clearing Members are notified of the settlement process through real-time messaging and/or reporting throughout the settlement day.

Key consideration 3: An FMI should clearly define the point after which unsettled payments, transfer instructions, or other obligations may not be revoked by a participant.

As part of the settlement process, pursuant to the settlement account agreement between CDCC and each of its Clearing Members, CDCC acts as agent to its Clearing Members accounts and therefore is fully accountable to submit, transfer, and settle instructions. Therefore, when coupled with the DvP and LYNX mechanisms for securities and money settlements, revocability by CDCC Clearing Members is not possible.

Principle 9: Money Settlements

Principle

An FMI should conduct its money settlements in central bank money where practical and available. If central bank money is not used, an FMI should minimise and strictly control the credit and liquidity risk arising from the use of commercial bank money.

Disclosure

Key consideration 1: An FMI should conduct its money settlements in central bank money, where practical and available, to avoid credit and liquidity risks.

CDCC conducts all of its money settlements vis-à-vis its Bank Clearing Members in central bank money. Settlement flows from transactional activity, as well as cash margin pledged to mitigate Clearing Member credit risk, reside in a CDCC bank account held at the Bank of Canada and is therefore a claim on the Government of Canada. For Clearing Members that do not have direct LYNXaccess, CDCC requires that such entities perform their money settlements through select acceptable financial institutions for Settlement Accounts that are subject to CDCC risk management controls, thereby minimizing credit and liquidity risks. All money settlements, for both Bank and non-Bank Clearing Members, are ultimately settled through the LYNXto ensure finality of payment.

Although USD settlements are supported, they are not material from a total cash flow perspective.

Key consideration 2: If central bank money is not used, an FMI should conduct its money settlements using a settlement asset with little or no credit or liquidity risk.

For non-Bank Clearing Members, CDCC employs a diversified sample of acceptable financial institutions for Settlement Accounts for money settlements through the LYNX. These acceptable financial institutions for Settlement Accounts are subject to strict risk management criteria (including capital and liquidity concerns, as a means of limiting the potential for credit and liquidity risk.

Key consideration 3: If an FMI settles in commercial bank money, it should monitor, manage, and limit its credit and liquidity risks arising from the commercial settlement banks. In particular, an FMI should establish and monitor adherence to strict criteria for its settlement banks that take account of, among other things, their regulation and supervision, creditworthiness, capitalisation, access to liquidity, and operational reliability. An FMI should also monitor and manage the concentration of credit and liquidity exposures to its commercial settlement banks.

As part of its Credit Risk Policy, CDCC has adopted a risk management oversight process for the Settlement Banks that it relies upon for settlements against non-Bank Clearing Members. This oversight process builds

on metrics such as capital, credit, and operational risks. The oversight process is subject to the RMC and Board of Directors reporting to ensure that all acceptable financial institutions for Settlement Accounts continue to meet the standards required by CDCC. Finally, all in-bound money settlements at CDCC need to be received prior to CDCC providing outbound payments and all are subject to a set settlement schedule in Eastern Time (ET). This operational requirement, which is part of the settlement process, contributes to greatly minimizing CDCC's credit and liquidity risks.

Key consideration 4: If an FMI conducts money settlements on its own books, it should minimise and strictly control its credit and liquidity risks.

Not applicable.

Key consideration 5: An FMI's legal agreements with any settlement banks should state clearly when transfers on the books of individual settlement banks are expected to occur, that transfers are to be final when effected, and that funds received should be transferable as soon as possible, at a minimum by the end of the day and ideally intraday, in order to enable the FMI and its participants to manage credit and liquidity risks.

As CDCC acts as agent to all Clearing Member accounts, the CDCC settlement timetable defines the point in time when transfers occur between itself and its Clearing Members. As such, for Clearing Members that do not have direct LYNX access, CDCC does not rely on its acceptable financial institutions for Settlement Accounts to perform any transfers with regards to payments. Instead, given that CDCC is entitled to act as an agent in the Clearing Member account, acceptable financial institutions for Settlement Accounts provide CDCC with access to non LYNX Clearing Member bank accounts for money settlement purposes.

Principle 10: Physical Deliveries

This principle is not applicable to CDCC.

Principle 11: Central Securities Depositories

This principle is not applicable to CDCC.

Principle 12: Exchange-of-value Settlement Systems

Principle

If an FMI settles transactions that involve the settlement of two linked obligations (for example, securities or foreign exchange transactions), it should eliminate principal risk by conditioning the final settlement of one obligation upon the final settlement of the other.

Disclosure

Key consideration 1: An FMI that is an exchange-of-value settlement system should eliminate principal risk by ensuring that the final settlement of one obligation occurs if and only if the final settlement of the linked obligation also occurs, regardless of whether the FMI settles on a gross or net basis and when finality occurs.

As a CCP for both exchange-traded derivatives and fixed income markets in Canada, CDCC settlement processes rely on a final exchange of cash against securities to satisfy ultimate settlement in many of the products that it clears. In order to manage the principal risk associated with linked settlement obligations, CDCC has acquired full participant status with the CDS, which acts as Canada's Securities Settlement System ("SSS"). As part of its CCP services, CDCC is responsible for submitting settlement instructions on behalf of its participants to CDS, thus leveraging the DvP mechanism that is inherent in the SSS operated by CDS.

All novated transactions at CDCC involving DvP settlement at CDS are settled on a gross basis outside of pre-defined netting cycles, which are performed five times per day on the books of CDCC. This DvP settlement is simultaneous between CDCC and its Clearing Members and is final and irrevocable once achieved. Therefore, there is an inherent reliance on CDCC's part vis-à-vis the SSS services offered by CDS and this reliance is governed by the participant agreement executed between CDCC and CDS.

Principle 13: Participant Default Rules and Procedures

Principle

An FMI should have effective and clearly defined rules and procedures to manage a participant's default. These rules and procedures should be designed to ensure that the FMI can take timely action to contain losses and liquidity pressures and continue to meet its obligations.

Disclosure

Key consideration 1: An FMI should have default rules and procedures that enable the FMI to continue to meet its obligations in the event of a participant default and that address the replenishment of resources following a default.

The CDCC Rules clearly articulate its default management process. As a designated clearing and settlement system under the PCSA, CDCC rights and actions taken pursuant to a participant default cannot be stayed or reversed, notwithstanding any act or statute in Canada or a legislative province. Furthermore, under PCSA, nothing in any law relating to bankruptcy or insolvency nor any order (including foreign laws or order) may prevent CDCC from terminating, netting, or settling the payment and delivery obligation, nor shall it interfere with CDCC's rights and remedies with respect to collateral granted to it.

CDCC's default management process is described in its Rules and Default Manual. The notion of default within the CDCC Rules is set out in two distinct modes: 1) non-conforming status and 2) suspended status. The Rules clearly define the potential triggers that may lead to a Clearing Member being declared non-conforming or suspended and the powers of the CDCC to act upon it. A Clearing Member may be placed into non-conforming status by CDCC management discretion but only the CDCC Board of Directors may declare a Clearing Member suspended.

The triggering events for non-conforming status range from payment default at the CDCC to the commencement of insolvency proceedings against either the Clearing Member or one of its affiliates. Non-conforming status declaration typically requires CDCC management to enter into discussions with the specific Clearing Member to ascertain the nature of the issue and the potential for resolution.

Given the nature of a non-conforming status, discretion is used throughout this process both in the allocation of the status as well as the potential measures taken by management to mitigate the risks associated with a Clearing Member. Potential actions that are subject to management discretion include, but are not limited to, the imposition of additional margin requirements, limiting CCP access, and/or requiring a reduction in the Clearing Member's risk profile through the liquidation or porting of positions.

In the event that management deems that the issue that caused the default trigger to be enacted is not transitory or not resolvable, management may recommend to the CDCC Board of Directors that such Clearing Member be placed in suspended status. A suspended status would then automatically require CDCC to begin executing against the governance practices, risk processes, and operational procedures

embedded within its Default Manual. Actions to be taken to contain the potential risks that may arise throughout the default management process are overseen and governed by the internal DMC, which is responsible for coordination across the various stakeholders while remaining accountable to the CDCC Board of Directors. The DMC is required to coordinate communications with key stakeholders, including regulators and non-defaulting Clearing Members, and the effective porting of client accounts to alternate Clearing Members. Furthermore, the DMC is responsible for coordinating the CDCC mechanisms regarding the liquidation of the suspended Clearing Member accounts, either by way of closed auction with non-defaulting Clearing Members, which is a voluntary process, or through open market operations via its brokerage arrangements. The DMC would also be responsible to ascertain the most effective hedging mechanism to be implemented in the event that accounts are not easily liquidated and/or if it judges that containing the market risk associated with an account would facilitate the auction. Finally, the DMC would oversee the effective porting of client accounts as well as the transfer of open positions to the prevailing bidder in the auction process.

Any losses incurred in the liquidation and/or liquidity management process are meant to be extinguished by the use of collateral provided as margin cover. CDCC Rules provide for full rights over variation and initial margin provided by the suspended Clearing Member as well as full right of use and re-hypothecation for the entirety of the Clearing Fund (suspended and non-defaulting Clearing Member alike). The default management waterfall and the order of application of the financial resources are clearly laid out in the Rules, which includes a layer of CDCC default capital that is reserved for this purpose. Finally, the Clearing Fund Rules also describe the process by which any collateral used in the extinguishment of credit losses are replenished and re-paid to non-defaulting Clearing Members.

Key consideration 2: An FMI should be well prepared to implement its default rules and procedures, including any appropriate discretionary procedures provided for in its rules.

Beginning with the Default Manual, CDCC has plans and procedures addressing the default management that are maintained, documented, and regularly revised and tested.

The plans include, among other things, the oversight process and governance arrangements for decision-making in a default, the auction procedure, the liquidation procedure, the account porting process, and the process to arrange for the Liquidating Settlement Account. CDCC has developed a detailed communication plan with all of its stakeholders, including non-defaulting Clearing Members (through the Risk Management Advisory Committee) and all of its regulators. These plans have been developed to ensure timely and appropriate communication throughout the default management process, beginning with any determination of a non-conforming status through the end of the entire process whereby CDCC would be required to replenish its financial resources. The default management process is reviewed and tested on an annual basis with a particular emphasis and focus on specific components of the broader process.

An appropriate level of flexibility is provided under the Rules and Default Manual to ensure that, in managing a default, CDCC has the authority and sufficient discretion to act, both in terms of the decision making process to initiate the process and measures to use to mitigate risk, taking into consideration the very specific nature of each default.

Key consideration 3: An FMI should publicly disclose key aspects of its default rules and procedures.

The Rules and Default Manual are publicly available through the CDCC website. These documents detail the specific actions that may lead to either a non-conforming and/or a suspended status as well as the actions taken by CDCC management and the Board of Directors in the default management process.

The Default Manual describes the breadth of actions that may be taken with regards to both proprietary and customer positions as well as the actions that management may take regarding the use and disposal of assets used to extinguish credit losses or the management of temporary liquidity needs.

Key consideration 4: An FMI should involve its participants and other stakeholders in the testing and review of the FMI's default procedures, including any close-out procedures. Such testing and review should be conducted at least annually or following material changes to the rules and procedures to ensure that they are practical and effective.

Testing of the CDCC default management process is performed at least annually and includes a broad range of stakeholders, including its Clearing Members, regulators, and other related FMIs. Generally, the test of the default management process involves the development of a test script and the participation of Clearing Members that are active actors in the default management simulation. These actors are required to follow industry procedures for elements such as the auction process, the porting process, and the liquidity provisioning process, among other key components of the default management exercise.

Test results and the resulting post-mortem are presented to the Board of Directors along with any recommended improvements that are an outgrowth of any lessons learned.

Principle 14: Segregation and Portability

Principle

A CCP should have rules and procedures that enable the segregation and portability of positions of a participant's customers and the collateral provided to the CCP with respect to those positions.

Disclosure

Key consideration 1: A CCP should, at a minimum, have segregation and portability arrangements that effectively protect a participant's customers' positions and related collateral from the default or insolvency of that participant. If the CCP additionally offers protection of such customer positions and collateral against the concurrent default of the participant and a fellow customer, the CCP should take steps to ensure that such protection is effective.

CDCC has rules and procedures that enable the segregation and portability of positions of a Clearing Member's customers and the collateral provided to CDCC with respect to those positions. This arrangement aims to offer customers protection from the default or insolvency of the Clearing Member.

Key consideration 2: A CCP should employ an account structure that enables it readily to identify positions of a participant's customers and to segregate related collateral. A CCP should maintain customer positions and collateral in individual customer accounts or in omnibus customer accounts.

CDCC's current account structure and margin methodology, as it relates to Futures markets, provides for both client omnibus account (*Client Account*) and individual client account (*Netted Client Account*) to hold a participant's customers' positions. In both cases, a net margin methodology is applied by CDCC. CDCC books and records allow for identification of Clearing Members customers' positions while the margin requirements allow CDCC to calculate the associated collateral. CDCC's system allows the Clearing Member to identify positions to a client level using CDCC's account / sub-account structure. While Clearing Members may maintain sub-accounts for clients in the client omnibus account, CDCC does not hold information related to a customer's identity and pledged collateral and as such offers only omnibus protection on such accounts. Enhancements are being developed to enable reports that reflect the client level positions and collateral, and implement Gross Customer Margin for client omnibus accounts.

CDCC's current account structure and margin methodology, as it relates to Options markets, provides for both client omnibus account (*Client Account*) and individual client account (*Netted Client Account*) to hold a participant's customers' positions. In the former case, a gross margin methodology is applied whereas in the latter case, a net margin methodology is applied by CDCC. CDCC books and records allow for identification of Clearing Members customers' positions while the margin requirements allow CDCC to calculate the associated collateral. CDCC's system allows the Clearing Member to identify positions to a client level using CDCC's account / sub-account structure.

Key consideration 3: A CCP should structure its portability arrangements in a way that makes it highly likely that the positions and collateral of a defaulting participant's customers will be transferred to one or more other participants.

The porting of client positions is permitted and possible under CDCC's Rules. CDCC may reach out to other entities, including the insolvent Clearing Member and its customers, in order to fully ascertain the contents of a client omnibus account. CDCC is currently working on rule changes in order to enhance its portability arrangements.

Key consideration 4: A CCP should disclose its rules, policies, and procedures relating to the segregation and portability of a participant's customers' positions and related collateral. In particular, the CCP should disclose whether customer collateral is protected on an individual or omnibus basis. In addition, a CCP should disclose any constraints, such as legal or operational constraints, that may impair its ability to segregate or port a participant's customers' positions and related collateral.

CDCC Rules and procedures relating to segregation and portability are made available through CDCC's website. In its Rules, policies, and procedures, CDCC discloses the measures related to customers' positions and collateral protection. CDCC, at a minimum, has a segregation and portability regime that effectively protects Clearing Members clients' positions and related collateral from the default or insolvency of that Clearing Member.

Principle 15: General Business Risk

Principle

An FMI should identify, monitor, and manage its general business risk and hold sufficient liquid net assets funded by equity to cover potential general business losses so that it can continue operations and services as a going concern if those losses materialise. Further, liquid net assets should at all times be sufficient to ensure a recovery or orderly wind-down of critical operations and services.

Disclosure

Key consideration 1: An FMI should have robust management and control systems to identify, monitor, and manage general business risks, including losses from poor execution of business strategy, negative cash flows, or unexpected and excessively large operating expenses.

CDCC has a robust ERM program designed to identify, monitor, and manage general business risks through a comprehensive control system. As part of this program, existing risks and emerging risks are systematically reviewed and re-assessed during the annual risk assessment exercise and monitored throughout the year. New business initiatives are systematically subject to a series of validation processes to ensure that they receive informed and effective consideration from a risk management perspective. Realized incidents, or risk events, are identified, monitored, and mitigated as appropriate. General business risks currently identified include an array of operational risks and strategic risks as well as risks introduced in the investment of CDCC assets.

Key consideration 2: An FMI should hold liquid net assets funded by equity (such as common stock, disclosed reserves, or other retained earnings) so that it can continue operations and services as a going concern if it incurs general business losses. The amount of liquid net assets funded by equity an FMI should hold should be determined by its general business risk profile and the length of time required to achieve a recovery or orderly wind-down, as appropriate, of its critical operations and services if such action is taken.

CDCC holds liquid net assets funded by equity in an amount that is equivalent to 12 months of operating expenses, excluding depreciation and amortization (“Operational Risk Capital”). This capital reserve is calibrated to ensure that CDCC may continue to operate as a going concern for a 12 month period in the event that it experiences general business losses.

Currently, in accordance with its regulatory requirements, CDCC has established a comprehensive and effective Recovery Plan that is reviewed and approved annually by its Board of Directors. The plan ensures that CDCC can continue to provide critical services and can replenish any financial resources that it may employ in implementing such plan. CDCC’s Recovery Plan provides for tools such as a Parental Support Agreement (“PSA”) with TMX Group to replenish CDCC’s Operational Risk Capital.

Key consideration 3: An FMI should maintain a viable recovery or orderly wind-down plan and should hold sufficient liquid net assets funded by equity to implement this plan. At a minimum, an FMI should hold liquid net assets funded by equity equal to at least six months of current operating expenses. These assets are in addition to resources held to cover participant defaults or other risks covered under the financial resources principles. However, equity held under international risk-based capital standards can be included where relevant and appropriate to avoid duplicate capital requirements.

CDCC holds liquid net assets funded by equity in an amount that is equivalent to 12 months of operating expenses, excluding depreciation and amortization. In accordance with its regulatory requirements, CDCC has established a comprehensive and effective Recovery Plan that is reviewed and approved annually by its Board of Directors

Key consideration 4: Assets held to cover general business risk should be of high quality and sufficiently liquid in order to allow the FMI to meet its current and projected operating expenses under a range of scenarios, including in adverse market conditions.

Assets held to cover general business risk are of high quality and sufficiently liquid in order to allow CDCC to meet its current and projected operating expenses under a range of scenarios, including adverse market conditions. CDCC's capital is invested in accordance with the principles embedded in its investment policy. CDCC's investment policy is reviewed on a recurring basis by the CDCC Risk and Audit Committee to ensure that it continues to meet the stated goals and objectives. The CDCC Investment Policy includes a section on segregation of CDCC capital which clearly describes the amounts set aside for default management and to support general business losses.

Key consideration 5: An FMI should maintain a viable plan for raising additional equity should its equity fall close to or below the amount needed. This plan should be approved by the board of directors and updated regularly.

CDCC's Recovery Plan provides tools such as a PSA with TMX Group to replenish CDCC's Operational Risk Capital.

Principle 16: Custody and Investment Risks

Principle

An FMI should safeguard its own and its participants' assets and minimise the risk of loss on and delay in access to these assets. An FMI's investments should be in instruments with minimal credit, market, and liquidity risks.

Disclosure

Key consideration 1: An FMI should hold its own and its participants' assets at supervised and regulated entities that have robust accounting practices, safekeeping procedures, and internal controls that fully protect these assets.

CDCC uses a number of custodians in its business operations. Clearing Member assets that qualify as book-entry securities are held at either CDS or entities that are either regulated banks or trust and loan companies. In the former case, CDS is a designated CSD in Canada subject to the oversight of the Bank of Canada and various provincial securities regulators. In the latter case, entities that are subject to the Bank Act or the Trust and Loans Companies Act are under the direct oversight of the Office of the Superintendent of Financial Institutions ("OSFI") of Canada.

Furthermore, CDCC's Rules set financial guidelines for the custodians that are considered acceptable and allow for the monitoring of custodians' financial soundness on an annual basis. CDCC relies on the regulatory oversight of these acceptable depositories for the purposes of evaluating their accounting, safekeeping, and internal control structure.

Key consideration 2: An FMI should have prompt access to its assets and the assets provided by participants, when required.

All of CDCC's custodians are Canadian legal entities and CDCC's legal arrangements involve a perfected first priority security interest in the relevant assets. As such, CDCC exercises its rights on these assets through control.

Key consideration 3: An FMI should evaluate and understand its exposures to its custodian banks, taking into account the full scope of its relationships with each.

CDCC uses three types of custodian banks for the purposes of safe-keeping of assets provided to satisfy cash and non-cash collateral. Cash collateral is maintained at the Bank of Canada, therefore, eliminating commercial bank risk. Non-cash collateral is held at financial institutions that are subject to OSFI oversight under either the *Bank Act* or the *Trust and Loans Companies Act*. As non-cash collateral is in book-entry form and CDCC has a first priority security interest in these assets, any potential risk arising from the failure

of the custodian bank is immaterial. Due to implementation of the Extended Asia Trading Hours, a few commercial financial institutions were selected to hold foreign currency deposits in respect of margin calls occurring during the Overnight cycle which introduced the commercial bank risk. CDCC implemented the Custody & Investment Risk Management Framework to systematically manage risks raised from custody and investment services provided by interdependencies such as custodians. This Framework establishes the risk-based preferences for custodial arrangements where the custodian cannot be a current Member (or affiliate) of the business activity for which the assets are being managed, for the avoidance of concentration risk and wrong-way risk. Custodians are assigned with concentration limits, and entity-level limits based on the internal assessment. CDCC will keep monitoring and updating the entity limits to reflect the most up-to-date risk profile. All this information is subject to reporting to the RMC on a quarterly basis. CDCC also managed the risk exposure raised by custodian banks via Critical Service Providers Risk Management program.

Key consideration 4: An FMI's investment strategy should be consistent with its overall risk-management strategy and fully disclosed to its participants, and investments should be secured by, or be claims on, high-quality obligors. These investments should allow for quick liquidation with little, if any, adverse price effect.

CDCC does not currently re-invest collateral provided by Clearing Members to satisfy margin requirements except in the case of cash collateral, which is provided and held within the interest-bearing CDCC bank account at the Bank of Canada.

CDCC assets, which form part of firm capital, are subject to a stringent investment policy which includes a variety of limits to manage investment risk. These include, but are not limited to: limits on obligors (credit and wrong-way risks); limits on investment term; limits on credit exposure; and market risk limits which are structured relative to certain benchmark indices. All of CDCC's private investments are subject to liquidity requirements so that assets can be converted into cash as necessary, either via market operations or through the use of a pre-arranged liquidity line.

Principle 17: Operational Risk

Principle

An FMI should identify the plausible sources of operational risk, both internal and external, and mitigate their impact through the use of appropriate systems, policies, procedures, and controls. Systems should be designed to ensure a high degree of security and operational reliability and should have adequate, scalable capacity. BCM should aim for timely recovery of operations and fulfilment of the FMI's obligations, including in the event of a wide-scale or major disruption.

Disclosure

Key consideration 1: An FMI should establish a robust operational risk-management framework with appropriate systems, policies, procedures, and controls to identify, monitor, and manage operational risks.

CDCC ensures that ORM is fully integrated with CDCC's overall risk management program through a robust documented framework. This ensures that both internal and external sources of risk arising from its operational activities, strategic objectives and management decisions are identified, assessed, managed, monitored, and reported.

The basis of this framework is the governance structure. The framework is driven by the Tier 1 ERM Policy, aligned with the ERM framework and supported by the Tier 2 ORM Policy and its set of Tier 3 policies. The policies provide a definition of operational risk and lay down the principles of how business processes, people (including succession planning, security screening, and fraud prevention), information technology (including project risk and change management) and external risks (including Third-party risk management and information security management) are to be identified, assessed, managed, monitored, and reported in a way that is consistent with CDCC's risk appetite statement. To ensure effective accountability for ORM, a "Three lines of defence" approach delineates objectives, roles, and responsibilities for each key practice. The OWG supports the consistent roll-out of the program and its daily management across business units, by acting as a dynamic force between business units, the ERM team, and the RMC.

The second component of the framework is the identification and assessment of operational risk. The CDCC risk universe delimits the scope of the ORM framework and is built on internal analysis through a Risk and Control Self-Assessment program and external benchmarking. A risk registry documents the key operational risks. An annual risk assessment exercise is conducted to update the risk profile and adjust CDCC's mitigating strategies. A Risk Evaluation Committee or REC ensures that before a new business initiative is introduced or undertaken, the inherent operational risk is subject to adequate assessment and/or mitigation procedures.

The third component of the framework includes core ORM processes. CDCC relies on incident and business continuity/disaster recovery management processes to manage risk events arising from its day-to-day operations. Recognizing the significance of Third-Parties in relation to their operational risks, CDCC implemented a Critical Service Provider ("CSP") management program to ensure that the risks associated

with the activities of CSPs are identified, assessed, managed, monitored, and reported. As part of the ongoing process of improvement, CDCC prepares to revise the participation requirement, which pertains to the operational standards required from the Clearing Members. CDCC relies on a team of experts from the TMX Information Security Office to get its critical assets protected from external and internal threats through 24x7 security operations, security engineering to harden its systems, vendor security risk assessments, and ongoing training to keep staff vigilant.

The fourth component of the framework is formed by operational risk monitoring and reporting to management. CDCC has implemented different processes to monitor its risk profile and keep track of its exposure to losses (e.g., monthly risk-event reports, monthly and quarterly ORM dashboards, and monthly operations statistics reports). In addition, CDCC performs the external risk event analysis of its peers and other interdependent entities. The objective of the review is to assess the impact and risk exposure to the CDCC. The review will be reported to senior management quarterly. CDCC is developing additional operational risk metrics and forward-looking tools.

The fifth and final component of the framework plans for an independent internal audit. CDCC ensures that the implementation of the approved ORM framework is deployed appropriately subjecting the latter to an effective and comprehensive internal audit. Internal audits are performed periodically, or if there are any significant changes in the ORM program, by the TMX Internal Audit function.

Key consideration 2: An FMI's board of directors should clearly define the roles and responsibilities for addressing operational risk and should endorse the FMI's operational risk-management framework. Systems, operational policies, procedures, and controls should be reviewed, audited, and tested periodically and after significant changes.

The CDCC Board of Directors endorses, at least annually, the ERM and ORM frameworks and requires that the Chief Risk Officer ("CRO") ensures that all risks are managed in line with the ERM policies and RAS of the organization. Furthermore, the risk registry documents the ownership of day-to-day risk management directly with the front-line managers, thereby ensuring a cultural awareness of risk issues across the organization. Finally, the Board of Directors receives, from the CRO, a quarterly risk/incident report on all enterprise-level risks, including the identified operational risks.

The ERM and ORM frameworks are structured along the lines of the three-lines-of-defense where the third line involves an independent audit function of critical business functions. Extensive audit reviews are conducted annually on business process risks, IT risks, business continuity, and disaster recovery.

Key consideration 3: An FMI should have clearly defined operational reliability objectives and should have policies in place that are designed to achieve those objectives.

The operational reliability objectives, both qualitative and quantitative, of systems used by CDCC are defined and reviewed, at least annually, in the following documents: TMX Global Technology Services (GTS)- CDCC Service Level Objectives; TMX-GTS's CDCC Availability Plan; and TMX-GTS's Capacity Plan. These objectives aim to ensure a high degree of security and operational reliability as they constitute the

main metrics to be monitored and observed on a periodic basis and to be actioned upon if they fail to meet the documented corporate objectives.

Key consideration 4: An FMI should ensure that it has scalable capacity adequate to handle increasing stress volumes and to achieve its service-level objectives.

On an annual basis, CDCC performs a capacity planning exercise to ensure that its systems have scalable capacity to handle volumes which are in line with business planning. On a periodic basis, the capacity planning exercise is expanded to include a wider range of scenarios, including the potential for peak volumes. Any potential capacity shortfalls are reviewed with the potential for mitigations to be introduced.

Key consideration 5: An FMI should have comprehensive physical and information security policies that address all potential vulnerabilities and threats.

The External Risk Management Policy, governed by the ORM policy, describes the key principles that guide CDCC in ensuring that the risk of loss due to injury to people, damage or loss of physical or intangible assets, and disruption of business activity as a result of external events such as natural or man-made disaster, terrorist attack, or widespread illness is adequately managed. CDCC is supported in this endeavor by the corporate Physical Security team.

The Information Security Policy, which is a sub-policy of the broader Operational Risk Policy, defines the key principles to ensure that CDCC's information and information assets are only accessed with appropriate authority, available when required, are not removed, corrupted, damaged, or harmed, are in compliance with legal and regulatory requirements, and when certainty exists concerning internal ownership and stewardship. CDCC relies on support and know-how from the corporate Information Security Office. In addition, CDCC ERM constantly performs effective challenges on cyber security, prepares and sends cybersecurity reports to the RMC and regulators quarterly.

Key consideration 6: An FMI should have a business continuity plan that addresses events posing a significant risk of disrupting operations, including events that could cause a wide-scale or major disruption. The plan should incorporate the use of a secondary site and should be designed to ensure that critical information technology (IT) systems can resume operations within two hours following disruptive events. The plan should be designed to enable the FMI to complete settlement by the end of the day of the disruption, even in case of extreme circumstances. The FMI should regularly test these arrangements.

CDCC has a strong contingency and continuity management program in place ensuring its ability for timely recovery of operations and fulfillment of FMI's obligations, including in the event of a wide-scale or major disruption.

The recovery and resumption objectives are defined within its corporate ORM policies with the overall system design targeting a 2-hour recovery time with no data loss. This is achieved via a fully mirrored

computer backup site to help ensure continued operations in the event that CDCC's primary site becomes unavailable. The business continuity requirements are reviewed on an annual basis by all CDCC business units and documented in the business impact analysis ("BIA"). The information is complemented by a risk and threat analysis annually conducted by TMX Risk Management.

In addition, a documented collection of procedures and information aims to enable CDCC to continue to deliver its critical services at an acceptable predefined level.

Finally, plans are rigorously tested no less than once yearly (e.g., quarterly remote connectivity access, table-top exercise, chain of command test, annual default simulation test, DR testing with Clearing Members, Industry-wide DR test, BCP Alternate Site test, etc.). This includes the documentation of lessons learned and post-mortem.

Key consideration 7: An FMI should identify, monitor, and manage the risks that key participants, other FMIs, and service and utility providers might pose to its operations. In addition, an FMI should identify, monitor, and manage the risks its operations might pose to other FMIs.

In appropriate circumstances, CDCC may need to retain service providers – both arms-length third parties and affiliated TMX Group entities (collectively "Service Providers") – to help fulfill a number of business objectives. Recognizing the risks that such Service Providers may pose to the organization, a corporate policy documents the commitment, roles, and responsibilities and management processes for their oversight in order to ensure that the Corporation achieves its corporate objectives of providing secure, reliable, and scalable clearing and settlement for the derivatives industry in Canada.

Principle 18: Access and Participation Requirements

Principle

An FMI should have objective, risk-based, and publicly disclosed criteria for participation, which permit fair and open access.

Disclosure

Key consideration 1: An FMI should allow for fair and open access to its services, including by direct and, where relevant, indirect participants and other FMIs, based on reasonable risk-related participation requirements.

CDCC's Rules provide the basis for Clearing Member eligibility with all of the requirements for membership made publicly available via its website. Requirements for membership are broadly categorized within legal, financial, and operational categories. CDCC Clearing Members are required to be Canadian legal entities which are either regulated broker-dealers under the IROC regime, banks subject to the Bank Act (Canada), financial services cooperatives regulated pursuant to an *Act respecting Financial Services Cooperatives*, or a credit union central or a central cooperative credit society which is incorporated and regulated under the laws of Canada or under the legislature of a province and whose principal purpose is to provide liquidity support to local credit unions or financial services cooperatives. In addition, certain public sector buy-side firms, such as pension funds or crown corporations that qualify as Limited Clearing Members under CDCC's Rules can also get direct access to CDCC's Fixed Income (Repo and Cash Buy/Sell back) market. Furthermore, all Clearing Members are required to satisfy certain financial requirements, such as minimum capital standards or credit ratings, on an on-going basis and remain in good standing with their relevant regulators. Finally, CDCC also requires that certain operational standards be satisfied prior to granting Clearing Member status, ranging from staffing levels during operating times to certification testing prior to membership being activated. These criteria are applied to all Clearing Members and are meant to ensure fair and equitable access to CDCC. In fact, the focus on these minimum standards ensures that CDCC's services are available to potential participants without introducing undue risk to the system. Furthermore, it should be noted that the CDCC board of directors is responsible for approving any application of a new Clearing Member and confirming that it meets the CDCC application criteria. Any excess risk that is introduced by any one particular Clearing Member such that these minimum thresholds are no longer respected are dealt with via other bilateral mechanisms that have been developed to manage the risk of one Clearing Member without penalizing the market as a whole.

Key consideration 2: An FMI's participation requirements should be justified in terms of the safety and efficiency of the FMI and the markets it serves, be tailored to and commensurate with the FMI's specific risks, and be publicly disclosed. Subject to maintaining acceptable risk control standards, an FMI should endeavour to set requirements that have the least-restrictive impact on access that circumstances permit.

As the main eligibility requirements are focused on legal, financial, and operational metrics, they act as the first line of defense against systemic risk and are therefore risk-based measures, with no requirements imposed by law or regulation. The financial requirements, while different for exchange-traded and fixed income participants, are calibrated to ensure that individual Clearing Members can meet the collateral and liquidity requirements required by the individual markets. Finally, the operational requirements target those firms that are not in a position to meet the strict operational guidelines of CDCC and therefore avoid any downstream consequences that may be realized due to an operational outage at any one Clearing Member.

All prospective Clearing Members are reviewed against the various eligibility requirements currently in force. In the event that a trend is discovered such that any or all of the requirements are overly restrictive, CDCC management would recommend to the Board of Directors that a Rule change be effected to correct the issue within the confines of CDCC risk tolerances.

Key consideration 3: An FMI should monitor compliance with its participation requirements on an ongoing basis and have clearly defined and publicly disclosed procedures for facilitating the suspension and orderly exit of a participant that breaches, or no longer meets, the participation requirements.

On-going compliance with the legal requirements is achieved in a variety of ways, including the use of an information sharing arrangement with the primary regulator of the Clearing Member and requiring Clearing Members, by Rule, to disclose to the CDCC any material changes in their legal and regulatory status. CDCC may perform audits on any of its Clearing Members and specific annual due diligence of its Limited Clearing Members. Financial requirements are monitored on a monthly basis based on information provided by the Clearing Members' primary regulator under the terms of the information sharing agreement and through publicly available information. Operational requirements and any potential incidents that are realized are tracked through the CDCC risk event management process and reported first to the OWG and then to the RMC and to regulatory agencies, if required. CDCC is developing additional participation requirements to manage potential incidents that may be the result of external risks introduced by Clearing Members.

The suspension or the orderly exit by a Clearing Member that is demonstrating a deteriorating risk profile or who no longer meets the minimum eligibility requirements, is governed under CDCC Rules. CDCC may, at its discretion through the authority of its Board of Directors, suspend such Clearing Member and facilitate an orderly wind-down that would be in the best interest of the market.

Principle 19: Tiered Participation Arrangements

Principle

An FMI should identify, monitor, and manage the material risks to the FMI arising from tiered participation arrangements.

Disclosure

Key consideration 1: An FMI should ensure that its rules, procedures, and agreements allow it to gather basic information about indirect participation in order to identify, monitor, and manage any material risks to the FMI arising from such tiered participation arrangements.

As part of its services to the exchange-traded derivatives market, CDCC offers Clearing Members the capacity to provide agency clearing services to non-Clearing Members. As such, CDCC has a tiered CCP service which provides central counterparty clearing to Clearing Members and non-Clearing Members. Although CDCC does not gather information on non-Clearing Members on a day-to-day basis, CDCC has access to certain information through an information sharing agreement with the Montreal Exchange. Moreover, the Rules do provide CDCC with the authority and capacity to audit the books and records of all Clearing Members if the particular circumstances require it.

Key consideration 2: An FMI should identify material dependencies between direct and indirect participants that might affect the FMI.

As the clearing model adopted by the CDCC is a principal model, non-Clearing Members introduce additional operational, credit, and liquidity risks to the Clearing Members that provide them with agency services. In addition, non-bank Clearing Members introduce liquidity risks to the bank Clearing Members that provide them with money settlement services.

CDCC has implemented a monthly Tiered Participation Monitoring Program which first identifies the source of potential tiered arrangements risks and then assesses the relative level of credit, liquidity, and operational risks it could represent for CDCC.

Key consideration 3: An FMI should identify indirect participants responsible for a significant proportion of transactions processed by the FMI and indirect participants whose transaction volumes or values are large relative to the capacity of the direct participants through which they access the FMI in order to manage the risks arising from these transactions.

CDCC's audit rights provide it with the mechanism to identify indirect participants that clear through Clearing Members. This ability will be augmented with the introduction of a Gross Customer Margining regime for the Futures market (Principle 14).

Additionally, CDCC has developed a monthly Tiered Participation Monitoring Program that allows it to identify the size of all participants' positions in relation to the size of their clearing member(s).

Key consideration 4: An FMI should regularly review risks arising from tiered participation arrangements and should take mitigating action when appropriate.

CDCC does have existing mitigations in place to guard against the additional operational, credit, and liquidity risks that arise through tiered participation arrangements. CDCC has adopted a monthly Tiered Participation Monitoring program that is subject to the CDCC Risk Management Committee oversight and review.

Principle 20: FMI Links

Principle

An FMI that establishes a link with one or more FMIs should identify, monitor, and manage link-related risks.

Disclosure

Key consideration 1: Before entering into a link arrangement and on an ongoing basis once the link is established, an FMI should identify, monitor, and manage all potential sources of risk arising from the link arrangement. Link arrangements should be designed such that each FMI is able to observe the other principles in this report.

As stated under Principle 20, a CCP for securities markets must establish and use a link to a CSD to receive and deliver securities. CDS is both a CSD and a SSS and which enables it to receive and deliver securities from and to its Clearing Members.

CDS is the clearing house that operates CDSX[®], a clearing and settlement system that has been designated under the *PCSA* to be of systemic importance.

CDS has also been designated by the Bank of Canada and certain provincial commissions' securities regulators as a Qualifying Central Counterparty ("QCCP") pursuant to the standards developed by the Basel Committee on Banking Supervision and adopted by the OSFI. This QCCP status reflects on the fact that CDS's CCP service is "based and prudentially supervised in a jurisdiction where the relevant regulator/overseer has established, and publicly indicated that it applies to the CCP on an ongoing basis, domestic rules and regulations that are consistent with the PFMI's."

CDCC, as a participant to CDS, relies on the regulating entities to ensure that potential risks arising from the link between CDCC and CDS are appropriately identified, monitored, and managed.

Key consideration 2: A link should have a well-founded legal basis, in all relevant jurisdictions, that supports its design and provides adequate protection to the FMIs involved in the link.

As a systemically important FMI, CDS's participants' rules have a well-founded, clear, transparent, and enforceable legal basis, with a high degree of certainty, in all relevant jurisdictions (that is, the jurisdictions in which CDCC is authorized and regulated).

Key consideration 3: Linked CSDs should measure, monitor, and manage the credit and liquidity risks arising from each other. Any credit extensions between CSDs should be covered fully with high-quality collateral and be subject to limits.

Not applicable.

Key consideration 4: Provisional transfers of securities between linked CSDs should be prohibited or, at a minimum, the retransfer of provisionally transferred securities should be prohibited prior to the transfer becoming final.

Not applicable.

Key consideration 5: An investor CSD should only establish a link with an issuer CSD if the arrangement provides a high level of protection for the rights of the investor CSD's participants.

Not applicable.

Key consideration 6: An investor CSD that uses an intermediary to operate a link with an issuer CSD should measure, monitor, and manage the additional risks (including custody, credit, legal, and operational risks) arising from the use of the intermediary.

Not applicable.

Key consideration 7: Before entering into a link with another CCP, a CCP should identify and manage the potential spill-over effects from the default of the linked CCP. If a link has three or more CCPs, each CCP should identify, assess, and manage the risks of the collective link arrangement.

Not applicable.

Key consideration 8: Each CCP in a CCP link arrangement should be able to cover, at least on a daily basis, its current and potential future exposures to the linked CCP and its participants, if any, fully with a high degree of confidence without reducing the CCP's ability to fulfil its obligations to its own participants at any time.

Not applicable.

Key consideration 9: A TR should carefully assess the additional operational risks related to its links to ensure the scalability and reliability of IT and related resources.

Not applicable.

Principle 21: Efficiency and Effectiveness

Principle

An FMI should be efficient and effective in meeting the requirements of its participants and the markets it serves.

Disclosure

Key consideration 1: An FMI should be designed to meet the needs of its participants and the markets it serves, in particular, with regard to choice of a clearing and settlement arrangement; operating structure; scope of products cleared, settled, or recorded; and use of technology and procedures.

CDCC has developed and continues to maintain numerous fora to ensure that its design meets the needs of CDCC's Clearing Members and the markets it serves. These external fora include its User Groups ("UG"s) and its RMAC, Individual services and products, product development, and the impacts on risk management and operations processes are regularly discussed. CDCC also participates in numerous industry working groups, such as the Investment Industry Association of Canada, in support of industry-wide initiatives and maintains an active communication protocol with market participants through the publication of Notices to Members. In addition, when new initiatives are launched by the Montréal Exchange, CDCC consults with its clearing members to ensure ease of adoption of any clearing impacts. Finally, CDCC has published and maintains Services Standards documents which are made available to all Clearing Members. In all cases, CDCC proactively seeks and responds to comments about its services from Clearing Members and non-Clearing Members via its relationship management function (CDCC Client services).

Key consideration 2: An FMI should have clearly defined goals and objectives that are measurable and achievable, such as in the areas of minimum service levels, risk-management expectations, and business priorities.

CDCC's operating model is made available to Clearing Members on CDCC's website.

In addition, CDCC has adopted a risk management framework which is consistent with the PFMI. CDCC measures its efficiency and effectiveness relative to its operations and risk management against these benchmarks and receives important feedback on its performance from both its User Groups and its RMAC.

Key consideration 3: An FMI should have established mechanisms for the regular review of its efficiency and effectiveness.

Summary reporting from User Groups and RMAC meetings is reviewed by CDCC management as well as the CDCC Board of Directors at least annually and forms part of its process for continued improvement.

Principle 22: Communication Procedures and Standards

Principle

An FMI should use, or at a minimum accommodate, relevant internationally accepted communication procedures and standards in order to facilitate efficient payment, clearing, settlement, and recording.

Disclosure

Key consideration 1: An FMI should use, or at a minimum accommodate, internationally accepted communication procedures and standards.

CDCC uses an array of internationally accepted communication procedures to facilitate the dissemination of information to its Clearing Members and the public. Examples include: email broadcasts; File Transfer Protocol & Secure File Transfer Protocol (FTP/sFTP); web technology to broadcast Notices, Operational notices, and rules/procedures to members; and video-conferencing and teleconferencing technology to conduct User Groups.

CDCC uses a series of internationally accepted communication standards for message format and reference data, such as:

- MQ Series for Repo/Fixed Income
- FiXML for Exchange-traded derivatives
- EBCDIC and ASCII files for End of Day (EoD) Data Service Files (DSFs)
- ASCII Tag Log Files (TLGs)
- SPAN (Standard Portfolio Analysis of Risk) Risk Arrays for Margining methodology
- TCP/IP (Transmission Control Protocol/Internet Protocol) for web communications and FTP server file uploads
- SMTP (Simple Mail Transfer Protocol) for inbound email messaging
- POP3 (Post Office Protocol 3) for outbound email messaging
- LYNX for Settlement Account processing
- SWIFT (Society for Worldwide Interbank Financial Telecommunication) Access into LYNX for Payments
- Subset of TCP/IP protocols (eg: SecureFTP, FTP, Telnet)
- Introduction of the LEI (Legal Entity Identifier) within the CDCC systems environment.

Principle 23: Disclosure of Rules, Key Procedures and Market Data

Principle

An FMI should have clear and comprehensive rules and procedures and should provide sufficient information to enable participants to have an accurate understanding of the risks, fees, and other material costs they incur by participating in the FMI. All relevant rules and key procedures should be publicly disclosed.

Disclosure

Key consideration 1: An FMI should adopt clear and comprehensive rules and procedures that are fully disclosed to participants. Relevant rules and key procedures should also be publicly disclosed.

CDCC's Rules, Operations, and Risk and Default Manuals, collectively forming the CDCC's Rules, comprise the rules and procedures under which the clearing system operates and are binding on Clearing Members. These documents are publicly available on CDCC's website. Upon request, CDCC will provide CDCC Clearing Member Application, Clearing Agreements & Agency Agreements. These documents form and define the legal obligations of both CDCC and its Clearing Members throughout the clearing and settlement process.

As CDCC is regulated by the Bank of Canada, the AMF in Québec, the OSC in Ontario, and the BCSC in British Columbia, one of the primary regulatory obligations is a public review process regarding all proposed changes to its Rules. All proposed changes are made public via the CDCC website as well as in the web sites of the relevant provincial regulators. Please refer to CDCC's comments under Principle 1: Legal Basis.

Key consideration 2: An FMI should disclose clear descriptions of the system's design and operations, as well as the FMI's and participants' rights and obligations, so that participants can assess the risks they would incur by participating in the FMI.

Information about the design of CDCC's clearing system and its operating procedures is found within CDCC's Rules and information about CDCC's clearing operations is included throughout the Rules and procedures. This information is available on the CDCC's website.

Training material for new Clearing Member employees is available on CDCC's extranet.

CDCC discretionary authority in the clearing and settlement process is clearly articulated in CDCC's Rules, where it relates to: 1) the declaration of a non-conforming status, 2) imposition of additional margin surcharges, and 3) attributing market value to a particular position where no reliable value is readily available.

Key consideration 3: An FMI should provide all necessary and appropriate documentation and training to facilitate participants' understanding of the FMI's rules and procedures and the risks they face from participating in the FMI.

CDCC facilitates its Clearing Members' understanding of its Rules and risks of participation through encouraging their participation in its RMAC and its User Groups meetings. These fora provide Clearing Members the opportunity to discuss any relevant risk and / or operational issues or to raise any concerns regarding changes to procedures or rules proposed by CDCC. These fora often involve a detailed discussion of key operational processes and risk management practices, active industry involvement and debate. Such discussions provide the evidence necessary that Clearing Members understand the nature of the Rules, procedures and risks they face through their participation.

In addition, CDCC's Client Services works to ensure Clearing Members' readiness for any changes to CDCC's rules and procedures.

Key consideration 4: An FMI should publicly disclose its fees at the level of individual services it offers as well as its policies on any available discounts. The FMI should provide clear descriptions of priced services for comparability purposes.

All information related to fees is publicly disclosed on CDCC's website. Fee modifications are announced via a Notice to Members with reasonable notification prior to implementation.

Key consideration 5: An FMI should complete regularly and disclose publicly responses to the CPSS-IOSCO disclosure framework for financial market infrastructures. An FMI also should, at a minimum, disclose basic data on transaction volumes and values.

CDCC updates its Qualitative Self-Assessment each year, or when material changes occur, consistent with the Disclosure Framework required under the PFMI requirements. Quantitative disclosures are made, consistent with the quantitative disclosure framework as required under the PFMI, on a quarterly basis.

Principle 24: Disclosure of Market Data by Trade Repositories

This principle is not applicable to CDCC.

V. List of publicly available resources

CDCC Rules

CDCC Rules: <https://rules.cdcc.ca/w/cdcc/cdcc-en>

CDCC Operations Manual: http://www.cdcc.ca/f_rules_en/cdcc_operations_manual_en.pdf

CDCC Risk Manual: http://www.cdcc.ca/f_rules_en/cdcc_operations_manual_en.pdf

CDCC Default Manual: http://www.cdcc.ca/f_rules_en/cdcc_operations_manual_en.pdf

CDCC Governance

CDCC By-laws: http://www.cdcc.ca/publications_bylaws_en

CDCC Board Charter: http://www.cdcc.ca/publications_governance_en

CDCC Board Code of Conduct: http://www.cdcc.ca/publications_governance_en

CDCC Governance Committee Charter: http://www.cdcc.ca/publications_governance_en

CDCC Statement of Corporate Governance: http://www.cdcc.ca/publications_governance_en

CDCC Risk and Audit Committee Charter: http://www.cdcc.ca/publications_governance_en

Legal Entity Identifier (LEI): http://www.cdcc.ca/f_en/2014-M61_en.pdf

Member Information

Member Notice: http://www.cdcc.ca/publications_notices_en

Membership List: http://www.cdcc.ca/members_en

Services and Product Information

Service Standard & Information for Industry Clearing Members document on Exchange Traded & Customized Derivatives Products: http://www.cdcc.ca/f_en/standards_et-otc_products_en.pdf

Service Standard & Information for Industry Clearing Members document on Fixed Income: http://www.cdcc.ca/f_en/standards_fixed_income_ccp_en.pdf

Margin Information

SPAN®: http://www.cdcc.ca/spanFiles_en